

Part number:

009-10155a

**HYDROMA**

HYDRAULICKÉ SYSTÉMY

**HIDROMA  
SISTEMS**

UKŁADY HYDRAULICZNE

**HYDROMA**

ГИДРАВЛИЧЕСКИЕ СИСТЕМЫ

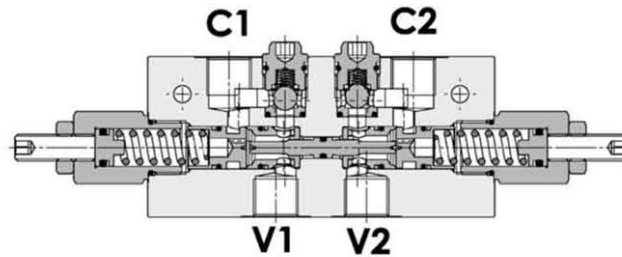
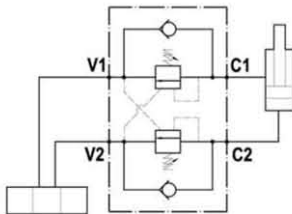
Tipo / Type

**FPOE 40 D-3/8-L-A-\*-\***

Sez / Section

**O**

Valvola overcenter doppia, montaggio in linea, serie E  
Dual overcenter valve, line mounted, E series



#### SPECIFICHE TECNICHE

**Materiali:** corpo in alluminio. I componenti interni sono in acciaio trattato termicamente.

**Portata max.:** 40 l/min

**Taratura max.:** 350 bar

**Rapporto di pilotaggio:** 2.9 : 1 (a richiesta 6.6 : 1)

**Regolazione pressione:** mediante vite

**Campo di regolazione pressione:** vedere pag.02

**Peso:** 0,900 Kg

#### TECHNICAL SPECIFICATIONS

**Materials:** body is in aluminium alloy. Internal parts are in hardened steel.

**Rated flow:** up to 40 l/min

**Max. setting:** 350 bar

**Pilot ratio:** 2.9 : 1 (standard), 6.6 : 1 on request

**Adjustment means:** leakproof screw adjustment

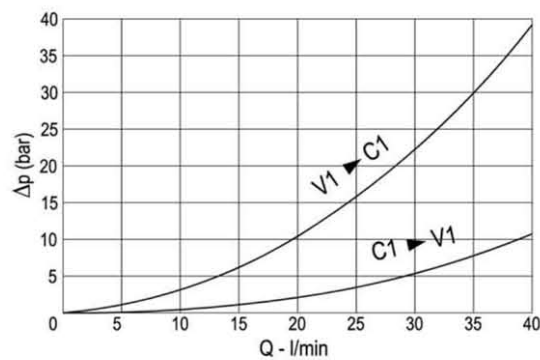
**Adjustable pressure range:** see page 02

**Weight:** 0,900 Kg

#### DIAGRAMMA PERDITE DI CARICO - PRESSURE DROP CURVES

Viscosità olio 24 mm<sup>2</sup>/sec. (3,5 °E)  
Temperatura 50 °C

Oil viscosity 24 mm<sup>2</sup>/sec. (3,5 °E)  
Temperature 50 °C



Part number:

**009-10155b**

**HYDROMA**

HYDRAULICKÉ SYSTÉMY

**HIDROMA  
SYSTEMS**

UKŁADY HYDRAULICZNE

**HYDROMA**

ГИДРАВЛИЧЕСКИЕ СИСТЕМЫ

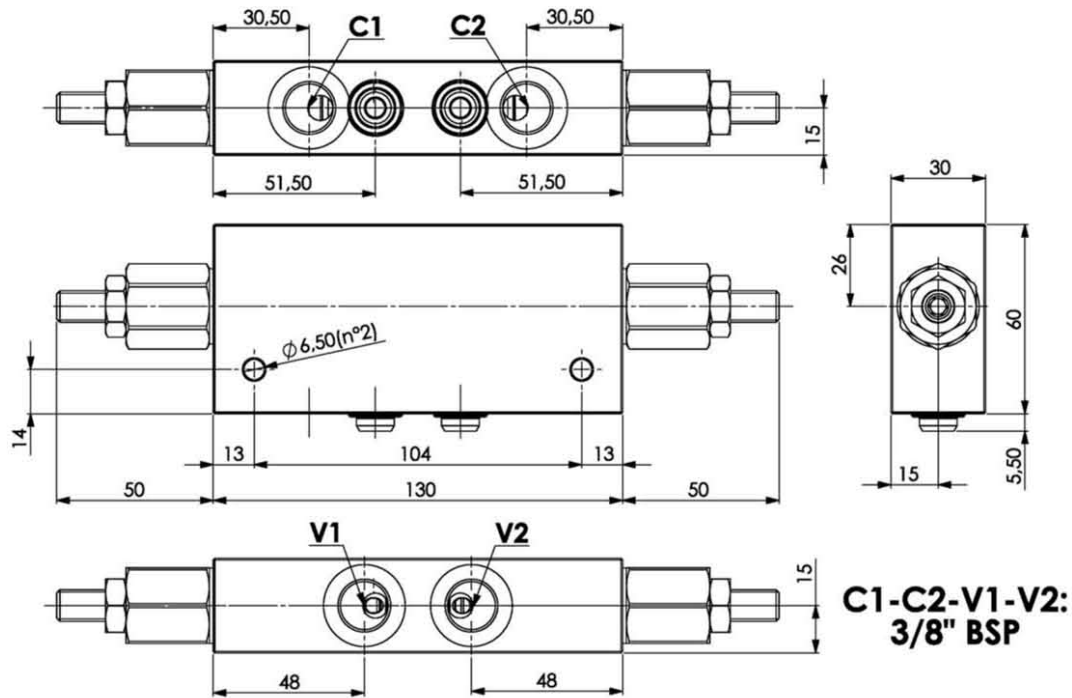
Tipo/Type

**FPOE 40 D-3/8-L-A-\*-\***

Sez/Section

**O**

Valvola overcenter doppia, montaggio in linea, serie E  
Dual overcenter valve, line mounted, E series



MOLLE - SPRINGS				
Codice Code *	Campo taratura min.-max. bar Adjustable pressure range bar	Incremento pressione bar/giro vite (r.pil.) Pressure increase bar/turn (pilot ratio)	Taratura std bar Std setting bar	Colore Colour
20	60 - 210	51 (2.9 : 1 - 6.6 : 1)	200	Verde - green
35	120 - 350	88 (2.9 : 1 - 6.6 : 1)	350	Rosso - Red

**ESEMPIO DI ORDINAZIONE - ORDERING CODE EXAMPLE**

FPOE 40 D 3/8 L A 20 \*

Codice base  
Basic code

Dimensione - dimension

Overcenter doppia  
Dual overcenter valve

3/8 - 3/8" BSPP

Montaggio in linea  
Line mounted

Rapporto di pilotaggio  
Pilot ratio  
Omettere se standard (2.9 : 1)  
Omit if standard (2.9 : 1)  
\* B = 6.6 : 1

Campo di regolazione pressione:  
Adjustable pressure range:  
"20" 60-210 bar (verde-green)  
\* "35" 120-350 bar (rossa-red)

Materiale corpo alluminio  
Body material, aluminium