

Part number:

009-10163a

**HYDROMA**

HYDRAULICKÉ SYSTÉMY

**HIDROMA  
SYSTEMS**

UKŁADY HYDRAULICZNE

**HYDROMA**

ГИДРАВЛИЧЕСКИЕ СИСТЕМЫ

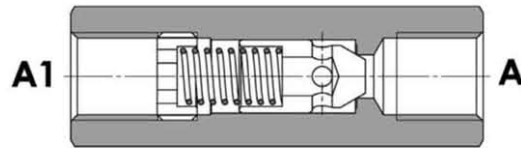
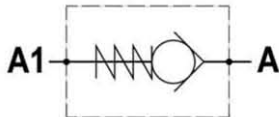
Tipo/Type

**FPR-\*. -\***

Sez./Section

**D**

Valvola di ritegno unidirezionale  
Check valve



**SPECIFICHE TECNICHE**

**Materiali:** corpo in acciaio. L'otturatore conico guidato è in acciaio trattato termicamente. La superficie esterna è protetta mediante zincatura.

**Portata:** fino a 310 l/min

**Pressione max.:** 350 bar, vedasi tabella a parte

**Pressione di apertura:** standard 0,5 bar, a richiesta 2.5-5-10 bar

**TECHNICAL SPECIFICATIONS**

**Materials:** body is steel made. Guided poppet is in hardened steel. External surface is zinc plated.

**Rated flow:** up to 310 l/min

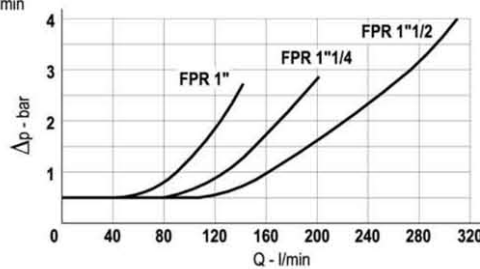
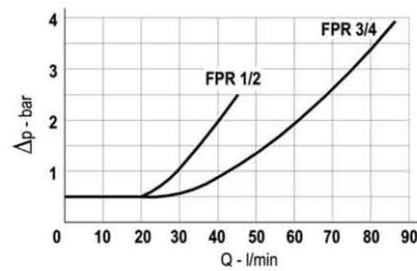
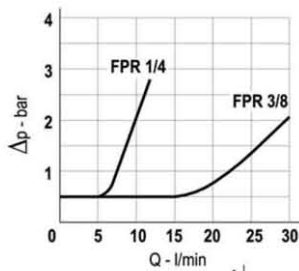
**Max. pressure:** 350 bar, see data sheet

**Cracking pressure:** 0,5 bar standard, on request: 2.5-5-10 bar

**DIAGRAMMA PERDITE DI CARICO - PRESSURE DROP CURVES**

Viscosità olio 24 mm<sup>2</sup>/sec. (3,5 °E)  
Temperatura 50 °C

Oil viscosity 24 mm<sup>2</sup>/sec. (3,5 °E)  
Temperature 50 °C



Part number:

**009-10163b**

**HYDROMA**

HYDRAULICKÉ SYSTÉMY

**HIDROMA  
SYSTEMS**

UKŁADY HYDRAULICZNE

**HYDROMA**

ГИДРАВЛИЧЕСКИЕ СИСТЕМЫ

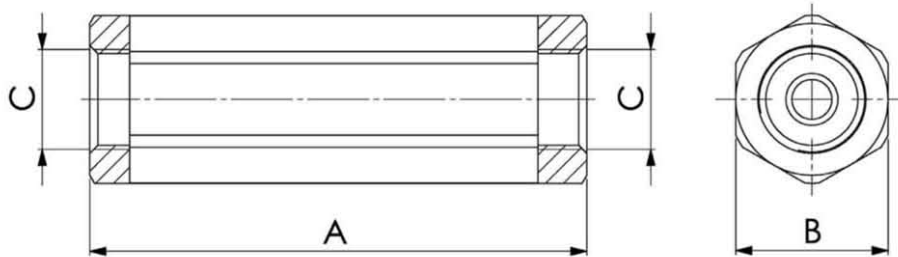
Tipo / Type

**FPR-\*\*-\***

Sez / Section

**D**

Valvola di ritegno unidirezionale  
Check valve



| TIPO<br>TYPE | PORTATA MAX.<br>MAX. FLOW | PRESSIONE MAX.<br>MAX. PRESSURE | A   | B  | C     | PESO<br>WEIGHT |
|--------------|---------------------------|---------------------------------|-----|----|-------|----------------|
|              | L/MIN                     | BAR                             | mm  | mm | BSPP  | Kg             |
| FPR 1/4"     | 12                        | 350                             | 62  | 19 | 1/4"  | 0,10           |
| FPR 3/8"     | 30                        | 350                             | 68  | 24 | 3/8"  | 0,17           |
| FPR 1/2"     | 45                        | 320                             | 78  | 27 | 1/2"  | 0,22           |
| FPR 3/4"     | 85                        | 300                             | 88  | 36 | 3/4"  | 0,45           |
| FPR 1"       | 140                       | 250                             | 112 | 46 | 1"    | 0,97           |
| FPR 1" 1/4   | 200                       | 250                             | 145 | 55 | 1"1/4 | 1,68           |
| FPR 1" 1/2   | 310                       | 210                             | 155 | 60 | 1"1/2 | 2,10           |

**ESEMPIO DI ORDINAZIONE - ORDERING CODE EXAMPLE**

FPR 1/4 2,5

Codice base  
Basic code

Connessioni  
Port Sizes

- 1/4 - 1/4" BSPP
- 3/8 - 3/8" BSPP
- 1/2 - 1/2" BSPP
- 3/4 - 3/4" BSPP
- 1 - 1" BSPP
- 1 1/4 - 1 1/4" BSPP
- 1 1/2 - 1 1/2" BSPP \*

Pressione apertura ritegno  
Cracking pressure  
Omettere se 0,5 bar  
Indicare se 2,5 - 5 - 10 bar  
Omit if 0,5 bar

\* Specify if 2,5 - 5 - 10 bar