

Part number:

096-10133

HYDROMA

HYDRAULICKÉ SYSTÉMY

**HIDROMA
SYSTEMS**

UKŁADY HYDRAULICZNE

HYDROMA

ГИДРАВЛИЧЕСКИЕ СИСТЕМЫ



Z*P

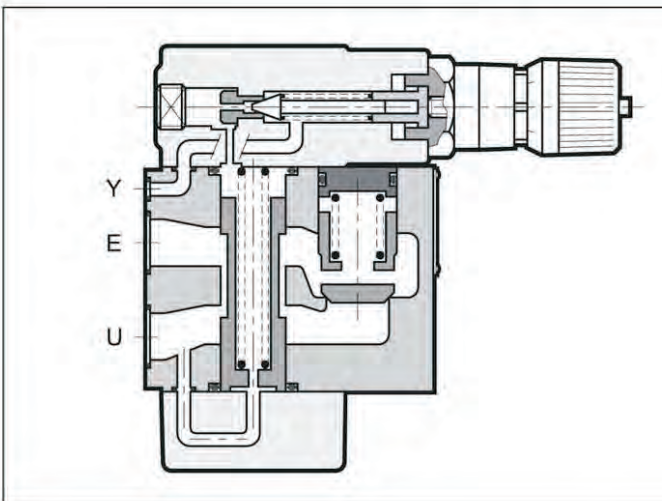
**PRESSURE REDUCING
VALVES
SERIES 22**

SUBPLATE MOUNTING:

Z3 CETOP 06

Z5 CETOP 08

OPERATING PRINCIPLE



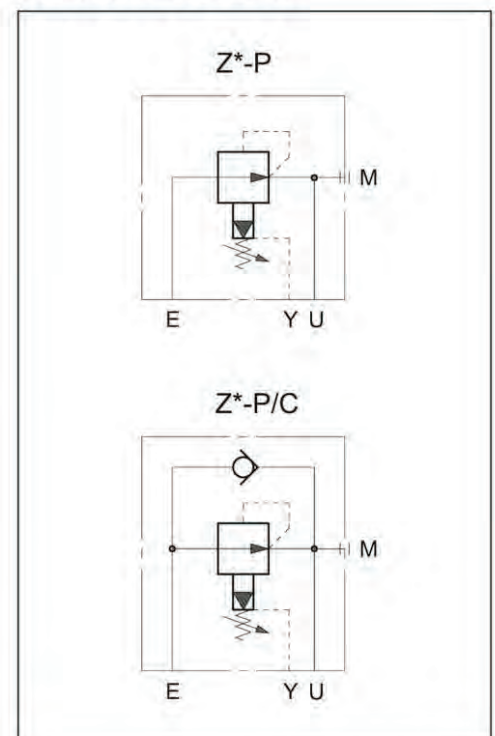
— The Z type valves are used when a branch with a lower pressure than the main branch is desired in the hydraulic circuits. Being normally open, they allow passage of oil up to the point when the outlet pressure is less than that set on the valve; the valve closes and keeps the outlet pressure constant when it reaches the set value. The intake pressure fluctuation, for values greater than the set values, does not affect the reduced outlet pressure, and furthermore the particular design of the valve prevents exceeding the set value even in transients. The drainage, to be connected directly to the reservoir, discharges about 0,8 l/min. The valves are available, upon request, with reduced drainage (0,4 l/min).

— Version with incorporated check valve, with cracking pressure of 0,5 bar, is available upon request.

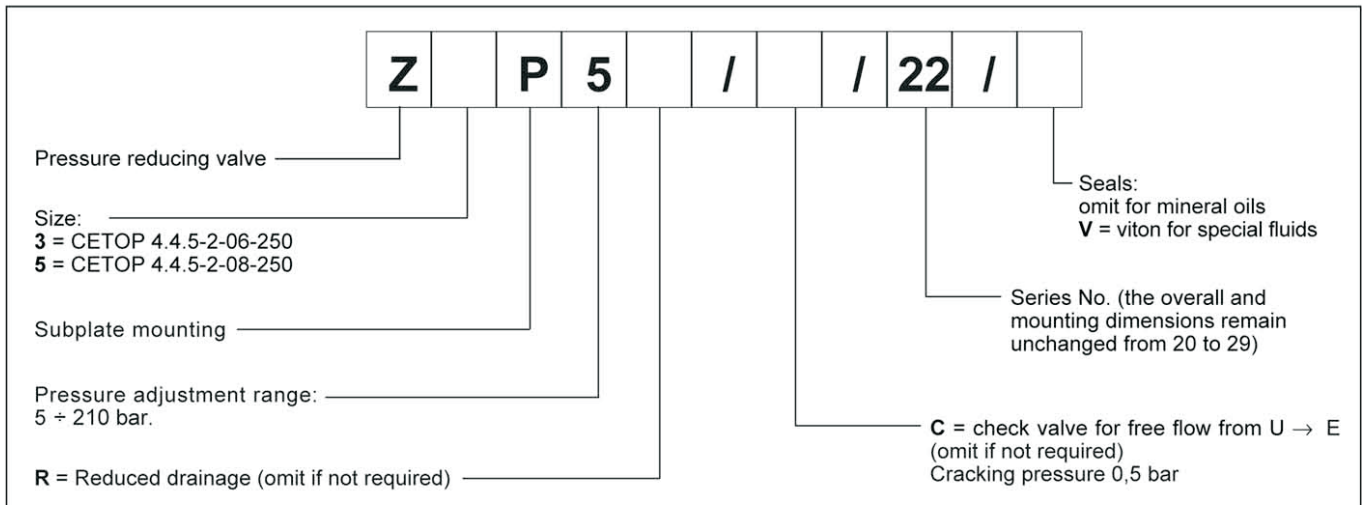
PERFORMANCE RATINGS (measured with mineral oil of viscosity 36 cSt at 50°C)

| | | Z3P | Z5P |
|----------------------------|-------------|-----------|-----|
| Maximum operating pressure | bar | 250 | 250 |
| Maximum flow rate | l/min | 40 | 110 |
| Drainage flow rate: | - for Z*P | 0,8 | |
| | - for Z*P*R | 0,4 | |
| Ambient temperature range | °C | -20 ÷ +50 | |
| Fluid temperature range | °C | -20 ÷ +70 | |
| Fluid viscosity range | cSt | 2,8 ÷ 380 | |
| Recommended filtration | µm absolute | ≤ 25 | |
| Recommended viscosity | cSt | 25 | |
| Mass | kg | 3,9 | 6,1 |

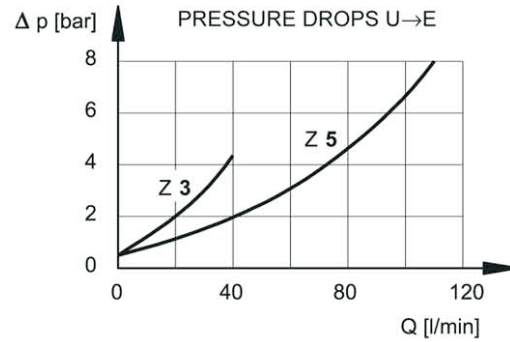
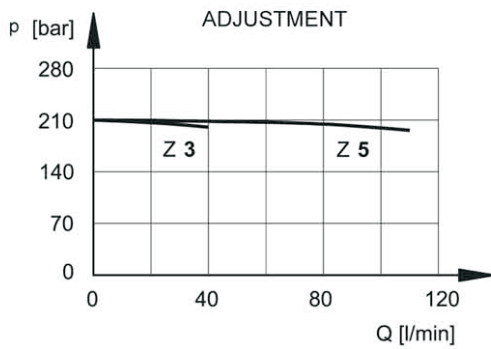
HYDRAULIC SYMBOLS



1 - IDENTIFICATION CODE



2 - CHARACTERISTIC CURVES (values obtained with viscosity of 36 cSt at 50°C)

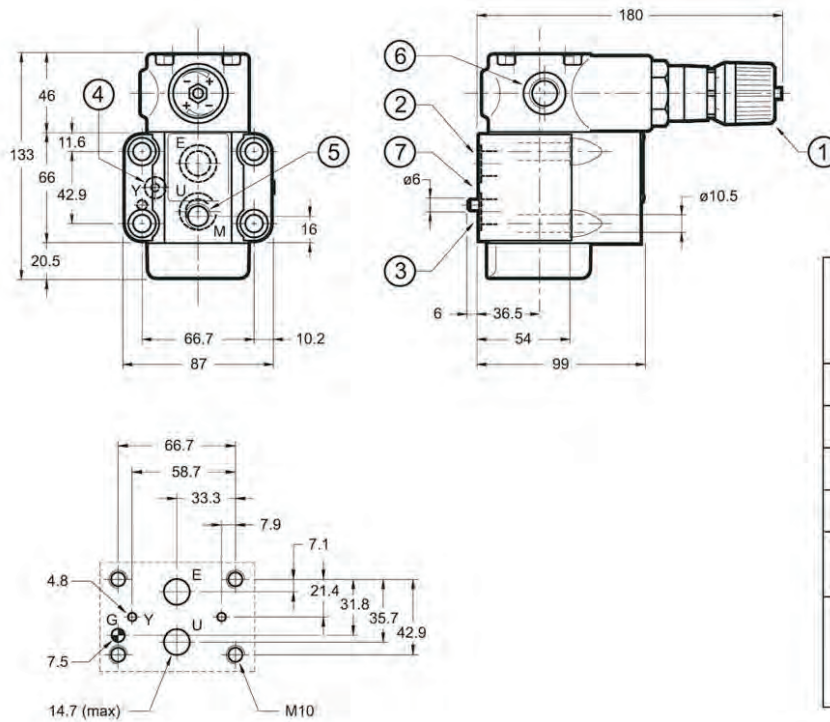


3 - HYDRAULIC FLUIDS

Use mineral oil-based hydraulic fluids, with the addition of suitable anti-frothing and anti-oxidizing agents.
 For the use of other types (water glycol, phosphate esters and others), please consult our technical department.

4 - Z3P OVERALL AND MOUNTING DIMENSIONS

dimensions in mm



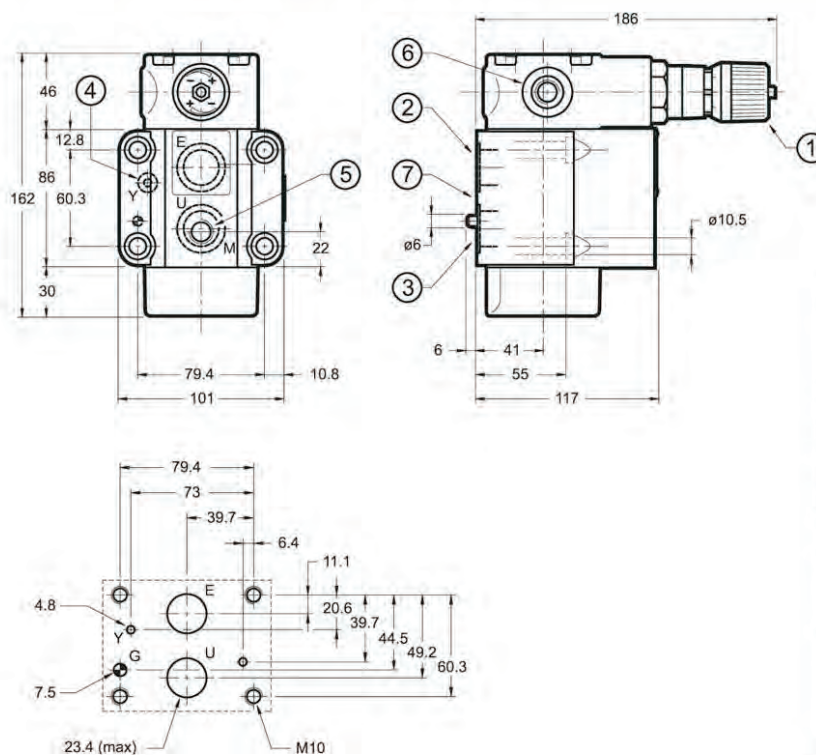
| | |
|---|--|
| 1 | SICBLOC adjustment knob. To operate, push and rotate at the same time. |
| 2 | Intake port |
| 3 | Outlet port |
| 4 | Drainage port |
| 5 | Pressure gauge port 1/4" NPT |
| 6 | Supplementary tube port for drainage 1/4" BSP |
| 7 | Mounting surface with sealing rings: 2 OR type 3068 2 OR type 2021 |

FASTENING BOLTS:
4 bolts M10x70
Tightening torque: 40 Nm

MOUNTING SURFACE: CETOP 4.4.5-2-06-250

5 - Z5P OVERALL AND MOUNTING DIMENSIONS

dimensions in mm



| | |
|---|--|
| 1 | SICBLOC adjustment knob. To operate, push and rotate at the same time. |
| 2 | Intake port |
| 3 | Outlet port |
| 4 | Drainage port |
| 5 | Pressure gauge port 1/4" NPT |
| 6 | Supplementary tube port for drainage 1/4" BSP. |
| 7 | Mounting surface with sealing rings: 2 OR type 3100 2 OR type 2021 |

FASTENING BOLTS:
4 bolts M10x70
Tightening torque: 40 Nm

MOUNTING SURFACE: CETOP 4.4.5-2-08-250

6 - SUBPLATES (see catalogue 51 000)

| | Z3P | Z5P |
|------------------------------|--|--|
| Type | PMSZ3-AI4G with rear ports PMSZ3-AL4G with side ports | PMSZ5-AI5G with rear ports PMSZ5-AL5G with side ports |
| Port dimensions E, U X, Y | 1/2 " BSP 1/4 " BSP | 3/4 " BSP 1/4 " BSP |