

Part number:

HYDROMA

HYDRAULICKÉ SYSTÉMY

**HIDROMA
SYSTEMS**

UKŁADY HYDRAULICZNE

HYDROMA

ГИДРАВЛИЧЕСКИЕ СИСТЕМЫ

**HYDRAULIC OPERATED CARTRIDGE VALVES
POPPET 2-WAY NORMALLY CLOSED**

VOI-A2-NC-06

OD.75 - K - 56 - Y

DESCRIPTION - OPERATION

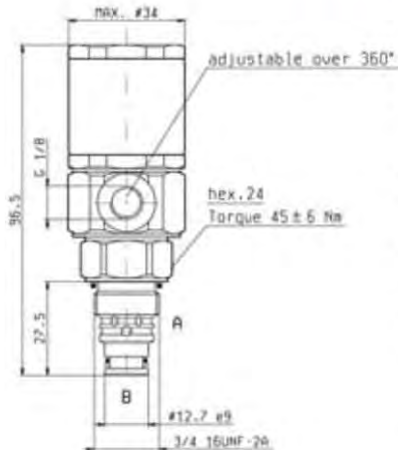
These hydraulic operated poppet style cartridge valves are particularly suitable to be used on trucks, on machinery operating under extreme weather conditions or anywhere electrical power is not available. They are designed with a modular construction allowing commonality of parts to produce a cost effective range and require a low operating pressure regardless of pressures and flows in the circuit.

FEATURES - RATINGS

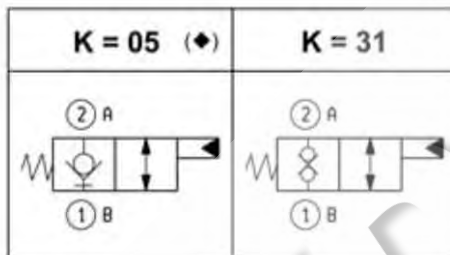
Maximum Operating Pressure **350 bar**

Rated Flow **40 l/min**

- Cavity - Tooling (page 7.01.10) : 018-E
- Weight : 0.265 kg
- Fluids - Temperatures - Testing Conditions - Seals : see page 7.01.04
- Internal Leakage : see page 7.01.04
- Filtration : 25 µm nominal or better, see page 7.01.05
- Mounting Position : unrestricted

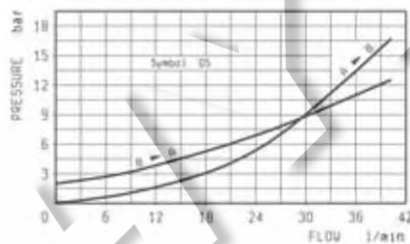


(◆) **IMPORTANT:** When valve is not operated, flow from B to A is not recommended due to high opening pressure.

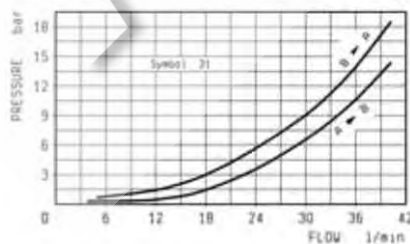


Y	OPERATING PRESSURE	
	MIN.	MAX.
14	2-3	15
34	15-20	50

PRESSURE DROP



PRESSURE DROP



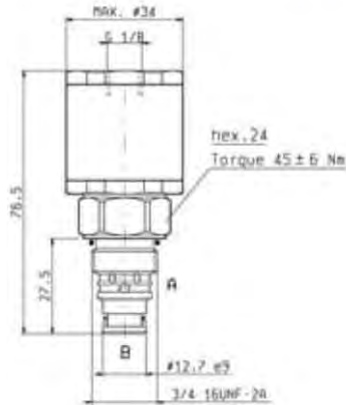
**HYDRAULIC OPERATED CARTRIDGE VALVES
POPPET 2-WAY NORMALLY OPEN**

VOI-A2-NA-06

OD.75 - K - 56 - Y

DESCRIPTION - OPERATION

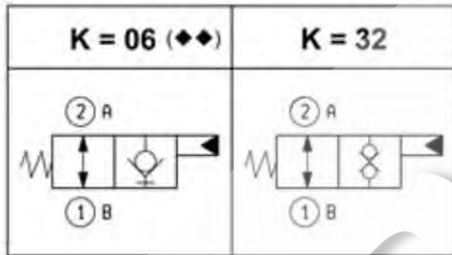
These hydraulic operated poppet style cartridge valves are particularly suitable to be used on trucks, on machinery operating under extreme weather conditions or anywhere electrical power is not available. They are designed with a modular construction allowing commonality of parts to produce a cost effective range and require a low operating pressure regardless of pressures and flows in the circuit.



FEATURES - RATINGS

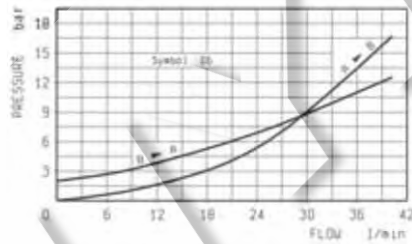
- | | |
|-----------------------------------|-----------------|
| Maximum Operating Pressure | 350 bar |
| Rated Flow | 40 l/min |
- Cavity - Tooling (page 7.01.10) : 018-E
 - Weight : 0.250 kg
 - Fluids - Temperatures - Testing Conditions - Seals : see page 7.01.04
 - Internal Leakage : see page 7.01.04
 - Filtration : 25 μm nominal or better, see page 7.01.05
 - Mounting Position : unrestricted

(◆◆) **IMPORTANT:** Flow from B to A with operated valve is not recommended due to high opening pressure.

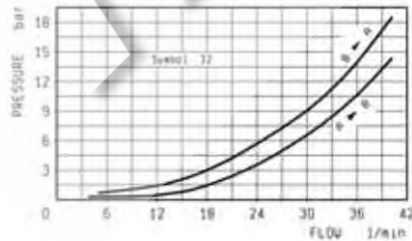


Y	OPERATING PRESSURE	
	MIN.	MAX.
14	2-3	15
34	15-20	50

PRESSURE DROP



PRESSURE DROP



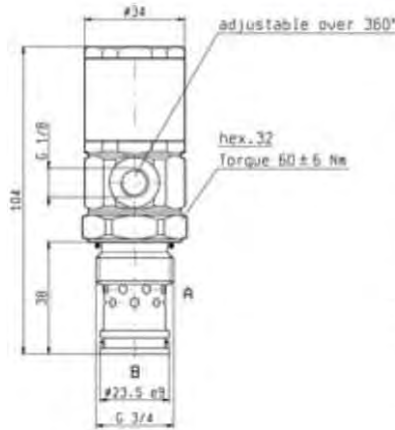
**HYDRAULIC OPERATED CARTRIDGE VALVES
POPPET 2-WAY NORMALLY CLOSED**

VOI-A2-NC-09

OD.75 - K - 04 - Y

DESCRIPTION - OPERATION

These hydraulic operated poppet style cartridge valves are particularly suitable to be used on trucks, on machinery operating under extreme weather conditions or anywhere electrical power is not available. They are designed with a modular construction allowing commonality of parts to produce a cost effective range and require a low operating pressure regardless of pressures and flows in the circuit.



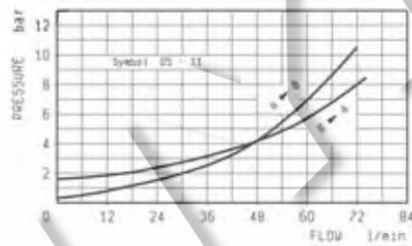
FEATURES - RATINGS

- Maximum Operating Pressure** 350 bar
Rated Flow 70 l/min
- Cavity - Tooling (page 7.01.10) : 017-E
 - Weight : 0.360 kg
 - Fluids - Temperatures - Testing Conditions - Seals : see page 7.01.04
 - Internal Leakage : see page 7.01.04
 - Filtration : 25 µm nominal or better, see page 7.01.05
 - Mounting Position : unrestricted

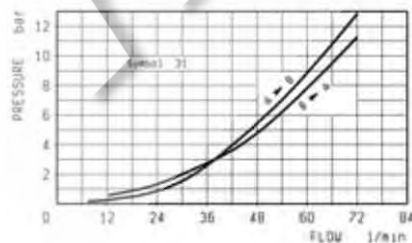
(♦) **IMPORTANT:** When valve is not operated, flow from B to A is not recommended due to high opening pressure.

	K = 05 (♦)	K = 11	K = 31	OPERATING PRESSURE	
				MIN. bar	MAX.
Y				14	15
				34	50

PRESSURE DROP



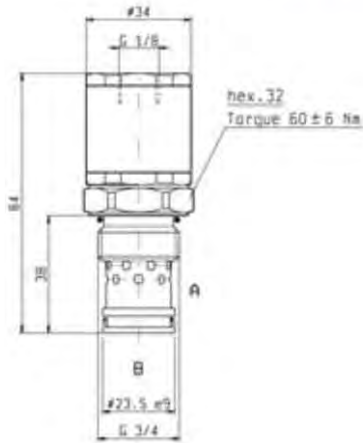
PRESSURE DROP



**HYDRAULIC OPERATED CARTRIDGE VALVES
POPPET 2-WAY NORMALLY OPEN**

VOI-A2-NA-09

OD.75 - K - 04 - Y



DESCRIPTION - OPERATION

These hydraulic operated poppet style cartridge valves are particularly suitable to be used on trucks, on machinery operating under extreme weather conditions or anywhere electrical power is not available. They are designed with a modular construction allowing commonality of parts to produce a cost effective range and require a low operating pressure regardless of pressures and flows in the circuit.

FEATURES - RATINGS

Maximum Operating Pressure 350 bar

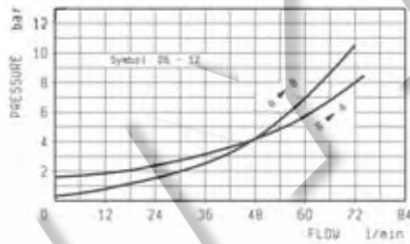
Rated Flow 70 l/min

- Cavity - Tooling (page 7.01.10) : 017-E
- Weight : 0.340 kg
- Fluids - Temperatures - Testing Conditions - Seals ; see page 7.01.04
- Internal Leakage : see page 7.01.04
- Filtration : 25 µm nominal or better, see page 7.01.05
- Mounting Position : unrestricted

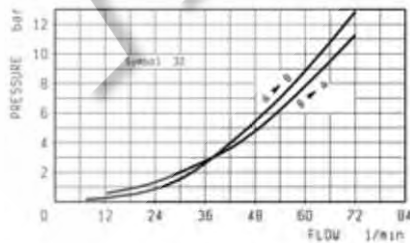
(◆◆) **IMPORTANT:** Flow from B to A with operated valve is not recommended due to high opening pressure.

	K = 06 (◆◆)	K = 12	K = 32	OPERATING PRESSURE	
				MIN. bar	MAX.
Y				2-3	15
14				15-20	50
34					

PRESSURE DROP



PRESSURE DROP



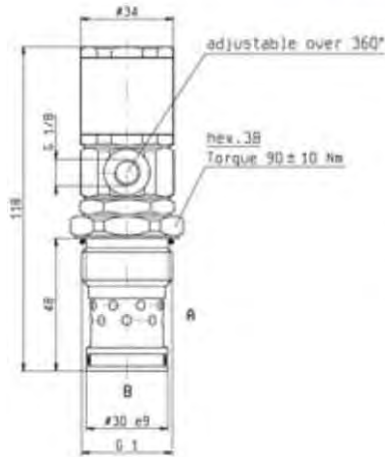
**HYDRAULIC OPERATED CARTRIDGE VALVES
POPPET 2-WAY NORMALLY CLOSED**

VOI-A2-NC-12

OD.75 - K - 05 - Y

DESCRIPTION - OPERATION

These hydraulic operated poppet style cartridge valves are particularly suitable to be used on trucks, on machinery operating under extreme weather conditions or anywhere electrical power is not available. They are designed with a modular construction allowing commonality of parts to produce a cost effective range and require a low operating pressure regardless of pressures and flows in the circuit.



FEATURES - RATINGS

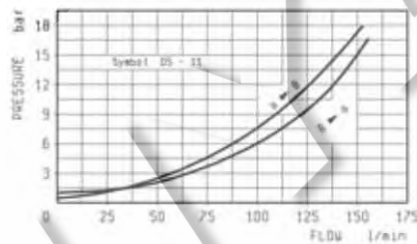
Maximum Operating Pressure 350 bar
Rated Flow 150 l/min

- Cavity - Tooling (page 7.01.11) : 021-E
- Weight : 0.500 kg
- Fluids - Temperatures - Testing Conditions - Seals : see page 7.01.04
- Internal Leakage : see page 7.01.04
- Filtration : 25 µm nominal or better, see page 7.01.05
- Mounting Position : unrestricted

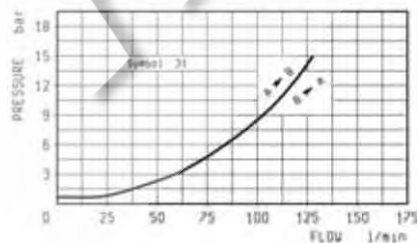
(♦) **IMPORTANT:** When valve is not operated, flow from B to A is not recommended due to high opening pressure.

	K = 05 (♦)	K = 11	K = 31	OPERATING PRESSURE	
				MIN. bar	MAX.
Y				2-3	15
14				15-20	50
34					

PRESSURE DROP



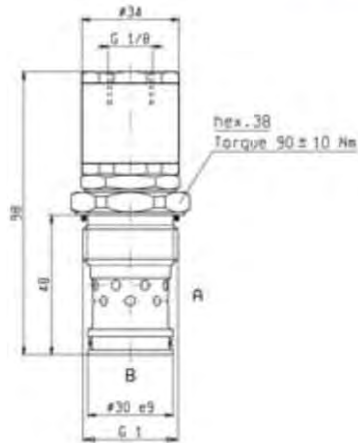
PRESSURE DROP



**HYDRAULIC OPERATED CARTRIDGE VALVES
POPPET 2-WAY NORMALLY OPEN**

VOI-A2-NA-12

OD.75 - K - 05 - Y



DESCRIPTION - OPERATION

These hydraulic operated poppet style cartridge valves are particularly suitable to be used on trucks, on machinery operating under extreme weather conditions or anywhere electrical power is not available. They are designed with a modular construction allowing commonality of parts to produce a cost effective range and require a low operating pressure regardless of pressures and flows in the circuit.

FEATURES - RATINGS

Maximum Operating Pressure 350 bar

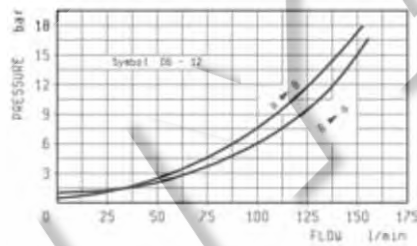
Rated Flow 150 l/min

- Cavity - Tooling (page 7.01.11) : 021-E
- Weight : 0.480 kg
- Fluids - Temperatures - Testing Conditions - Seals ; see page 7.01.04
- Internal Leakage : see page 7.01.04
- Filtration : 25 µm nominal or better, see page 7.01.05
- Mounting Position : unrestricted

(◆◆) **IMPORTANT:** Flow from B to A with operated valve is not recommended due to high opening pressure.

	K = 06 (◆◆)	K = 12	K = 32	OPERATING PRESSURE	
				MIN. bar	MAX.
Y				14	15
				34	50

PRESSURE DROP



PRESSURE DROP

