

Part number:

**006-10584**

**HYDROMA**

HYDRAULICKÉ SYSTÉMY

**HIDROMA  
SYSTEMS**

UKŁADY HYDRAULICZNE

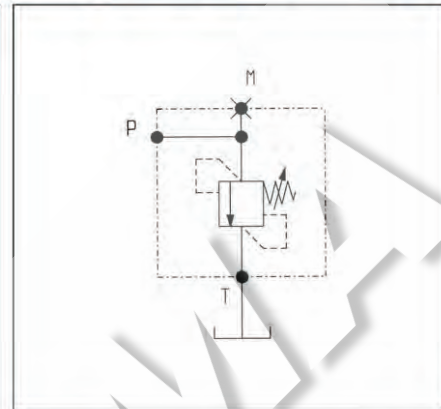
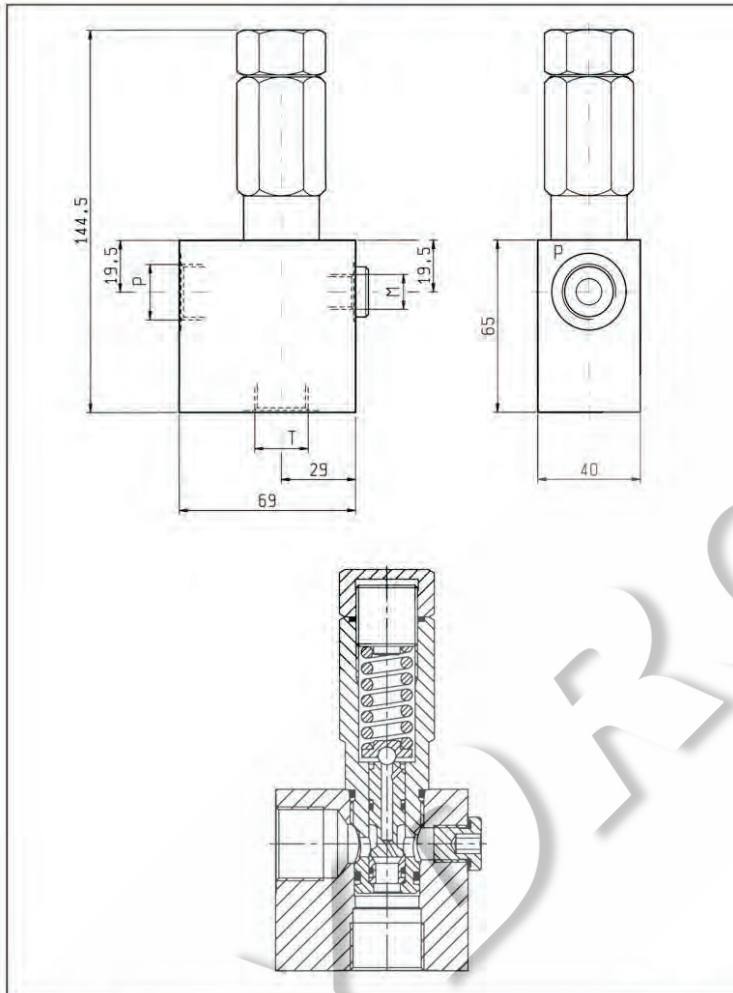
**HYDROMA**

ГИДРАВЛИЧЕСКИЕ СИСТЕМЫ

**MASSIMA PRESSIONE, DIRETTE, OTTURATORE DIFFERENZIALE  
DIRECT, DIFFERENTIAL PISTON RELIEF**

**VSDC-150**

**05.12.02 - X - Y - Z**

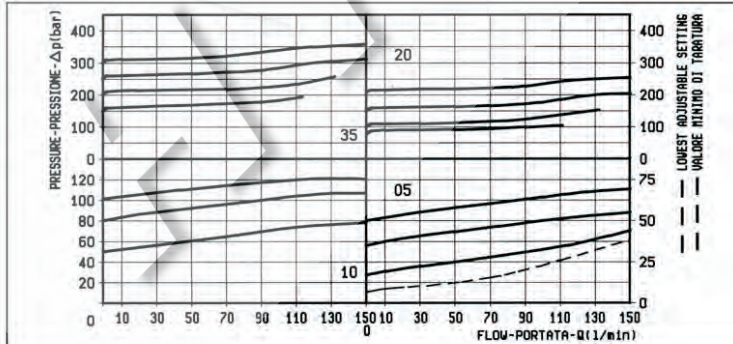


**DATI TECNICI / TECHNICAL DATA**



Pressione di lavoro max. 350 bar  
Max. working pressure

Portata max. 150 l/min  
Flow max.

Peso 0.9 kg  
Weight



**X REGOLAZIONI  
ADJUSTMENTS**

- 03** vite interna esagono incassato leakproof inner hex. socket screw 
- cappello per piombatura sealing cap codice / ordering code 03.05.01.001 

**MOLLE / SPRINGS**

Z	MOLLE / SPRINGS				
	Campo taratura min - max bar Adj. press. range bar	Incremento press. bar / giro vite Press. increase bar / turn	Taratura standard bar (Q = 5 l/min) Std. setting bar (Q = 5 l/min)	Cod. ordinazione Ordering code	Colore Colour
<b>05</b>	5-50	16	50	03.51.01.150	nero black
<b>10</b>	40-100	33	100	03.51.01.151	blu blue
<b>20</b>	70-210	68	200	03.51.01.152	verde green
<b>35</b>	130-350	105	350	03.51.01.142	giallo yellow

**Y ATTACCHI / PORT SIZE**

Y	ATTACCHI / PORT SIZE	
	P-T	M
<b>02</b>	G 1/2	G 1/4
<b>03</b>	G 3/4	G 1/4