

Part number:

006-10592

HYDROMA

HYDRAULICKÉ SYSTÉMY

**HIDROMA
SYSTEMS**

UKŁADY HYDRAULICZNE

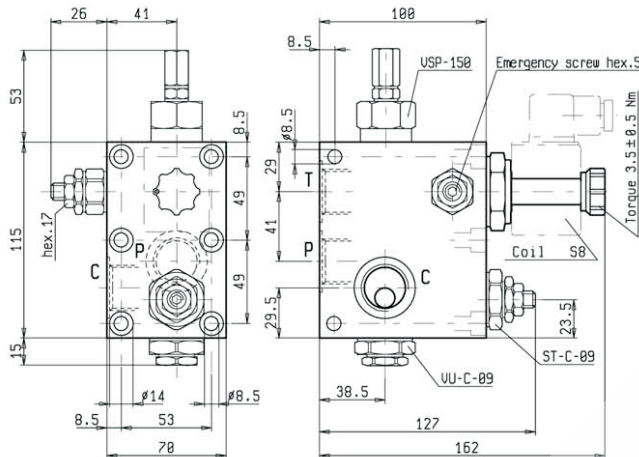
HYDROMA

ГИДРАВЛИЧЕСКИЕ СИСТЕМЫ

**STANDARD INTEGRATED CIRCUITS
FOR SINGLE-ACTING CYLINDERS**

VEI8A-VU-VS-ST-09

OL - K - Y - Z - W - 00



DESCRIPTION - OPERATION

These blocks are typically used in hydraulic lifts with single acting cylinder.

With NC solenoid valve (symbol 51) the load lifting is obtained by starting the pump and the lowering by energizing the solenoid valve; when the pump and the solenoid valve are off, the perfect load-holding is ensured.

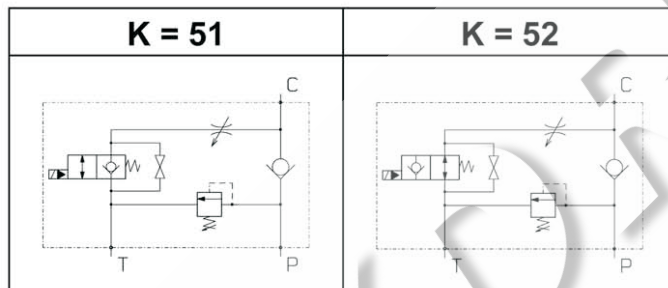
With NO solenoid valve (symbol 52) features are reversed.

FEATURES - RATINGS

Maximum Operating Pressure 250 bar

Rated Flow 70 l/min

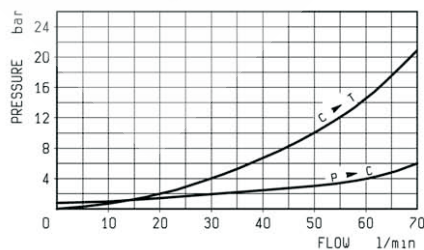
- Weight : 2.600 Kg
- Fluids - Temperatures - Testing Conditions - Seals : see page 7.01.04
- Internal Leakage : see page 7.01.04
- Filtration : 25 µm nominal or better, see page 7.01.05
- Minimum Voltage Required : 90% of nominal
- Coils must be ordered separately, see page 1.71.05
- Response Time : see page 1.11.46 and 1.12.46
- Sealing Cap for Relief Valve : Ordering code 03.05.01.004
- Manifolds in high-strength aluminum for working pressures up to 250 bar.
- Special steel manifolds can be supplied upon request for working pressures up to 350 bar and for fatigue cycle applications with any working pressure.



Y	PORT SIZE P - T - C
04	G 3/4

Z		SPRINGS			
Adj. press. Range bar	Std. Setting bar (Q=5 l/min)	Ordering code	Colour		
01	02	1.7-70	50	black	
04	05	7-105	100	blue	
07	08	10-210	200	green	
10	11	35-350	350	yellow	

PRESSURE DROP



W	MANUAL OVERRIDE OPTIONS	
	K = 51	K = 52
17	/	No Override
18	/	Push Style
19	/	Push and Twist Style
37	No Override	/
47	Knob Style	/