

Part number:

HYDROMA

HYDRAULICKÉ SYSTÉMY

**HIDROMA
SYSTEMS**

UKŁADY HYDRAULICZNE

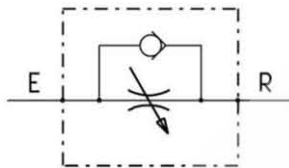
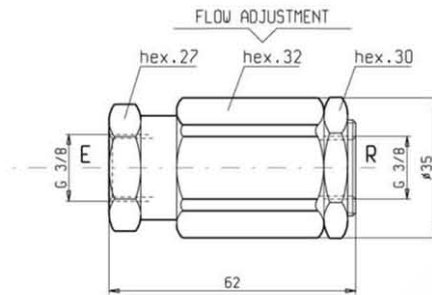
HYDROMA

ГИДРАВЛИЧЕСКИЕ СИСТЕМЫ

**FLOW CONTROL VALVES
IN LINE RESTRICTORS WITH REVERSE FLOW CHECK**

SU-M-38

OE.21.01.04.02



DESCRIPTION - OPERATION

These are simple in line flow restrictors with check valve and female threads in the outer sleeve.

The adjustment from zero to full flow is obtained rotating 200° approx. the outer sleeve.

FEATURES - RATINGS

Maximum Operating Pressure

210 bar

Rated Flow

1 - 25 l/min

- Weight : 0.370 Kg
- Fluids - Temperatures - Testing Conditions - Seals : see page 7.01.04
- Flow range adjustment : from 15° to 200°
- Filtration : 25 µm nominal or better, see page 7.01.05

PRESSURE DROP

