

Part number:

021-10093

HYDROMA

HYDRAULICKÉ SYSTÉMY

**HIDROMA
SYSTEMS**

UKŁADY HYDRAULICZNE

HYDROMA

ГИДРАВЛИЧЕСКИЕ СИСТЕМЫ

In-line manifolds

PD06

**HA 0006
1/2003**

Size 06 • ...3626 PSI (250 bar)

Replaces
HA 0006 2/2000

- For in-line mounting of hydraulic valves
- Parallel connection of ports P and T
- 1 ... 10 sections possible
- Installation dimensions to ISO 4401-03-02-0-94 and DIN 24 340-A6
- Mounting Accessories



Ordering Code

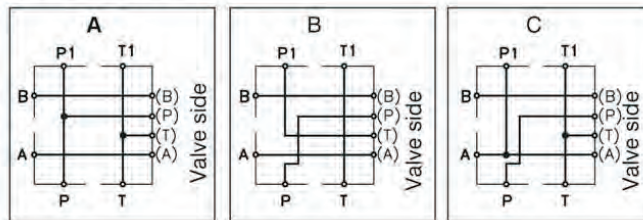
PD06 **-AL**

In-line connecting platte

Material - aluminium

Nominal size

Connection
Functional symbols



Number of section

1	1 section
2	2 sections
3	3 sections
4	4 sections
5	5 sections
6	6 sections

Survey of Types

Type	Ordering number	Weight
PD06A1-AL	760-0031	1.572 lbs (0.713 kg)
PD06B1-AL	760-0037	1.574 lbs (0.714 kg)
PD06C1-AL	760-0038	1.568 lbs (0.711 kg)
PD06A2-AL	760-0032	3.109 lbs (1.410 kg)
PD06A3-AL	760-0033	4.652 lbs (2.110 kg)
PD06A4-AL	760-0034	6.217 lbs (2.820 kg)
PD06A5-AL	760-0035	7.771 lbs (3.525 kg)
PD06A6-AL	760-0036	9.326 lbs (4.230 kg)

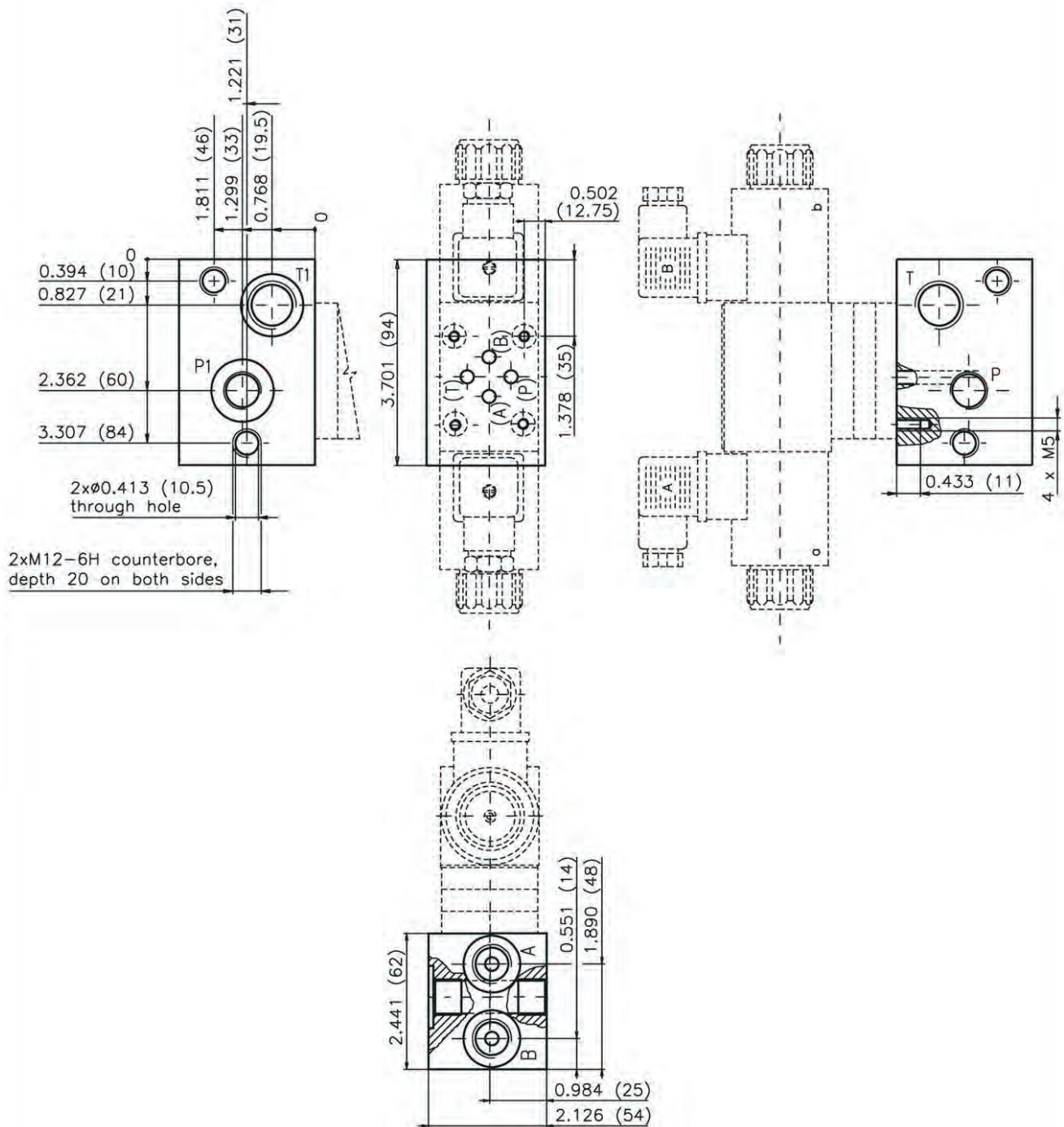
**FOR PREFERRED TYPES SEE BOLD TYPING IN ORDERING CODE
AND TABLE OF SURVEY OF TYPES**

Valve Dimensions

Dimensions in inches and millimeters (in brackets)

Plates with 1 section

Plates with 1, 2, 3 and 4 sections enable combinations up to 10 sections



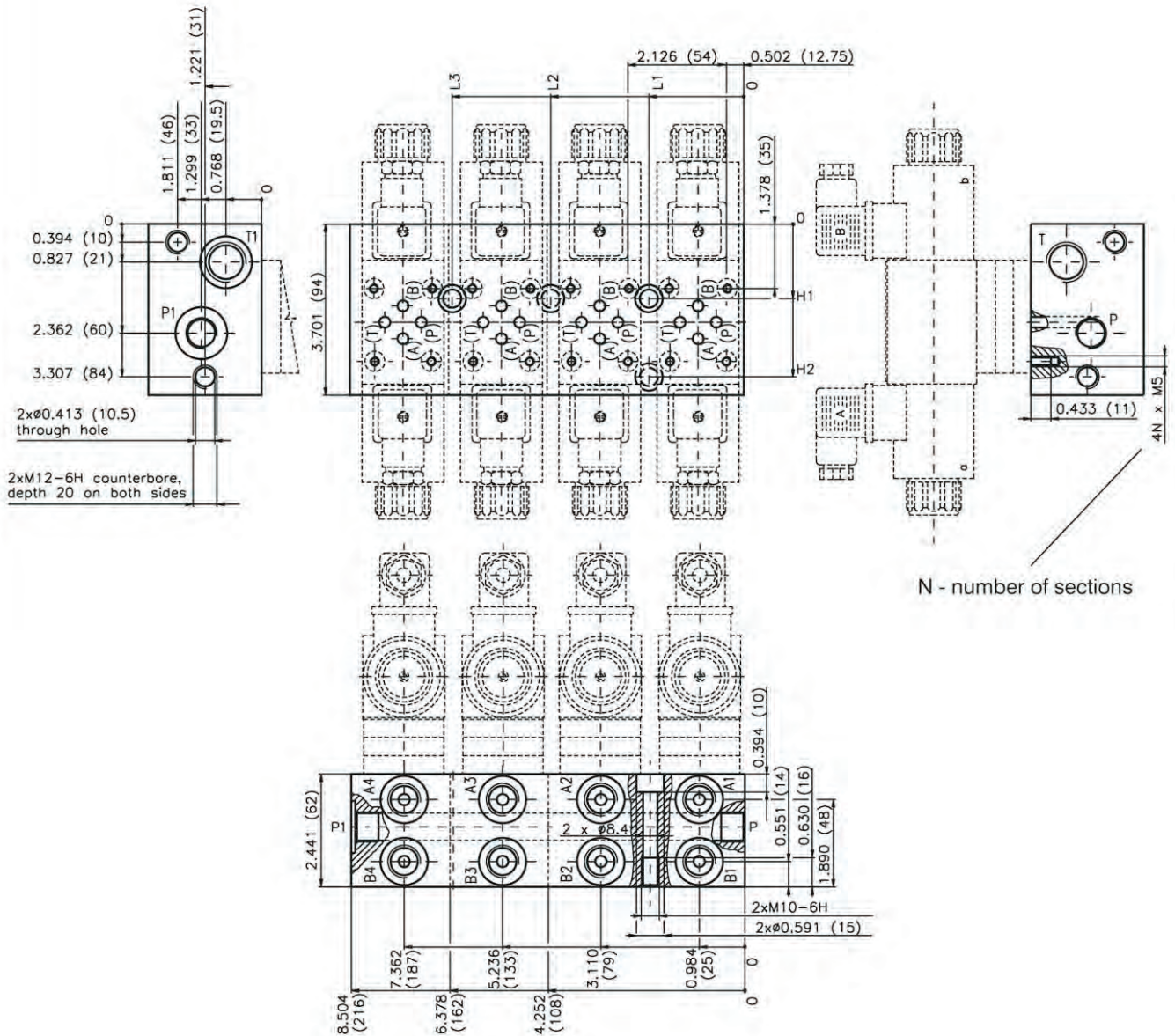
Port	A, B	P	T	P1	T1
Thread	G3/8	G3/8	G1/2	G3/8	G1/2
Depth of thread	0.512 (13)	0.512 (13)	0.670 (17)	0.512 (13)	0.670 (17)
Counterbore	ϕ 0.945 (24)	-	-	ϕ 1.118-0.008 (28.4-0.2)	ϕ 1.118-0.008 (28.4-0.2)
Depth of counterbore	0.020 (0.5)	-	-	0.083-0.004 (2.1-0.1)	0.083-0.004 (2.1-0.1)
O-Ring [mm]	-	-	-	23.4 x 2.62	23.4 x 2.62

Valve Dimensions

Dimensions in inches and millimeters (in brackets)

Plates with 2 ... 4 sections

Plates with 1, 2, 3 and 4 sections enable combinations up to 10 sections



Number of sections	L1	L2	L3	H1	H2
2	2.047 (52)	-	-	1.614 (41)	3.307 (84)
3	2.047 (52)	4.173 (106)	-	1.614 (41)	-
4	2.047 (52)	-	6.300 (160)	1.614 (41)	-

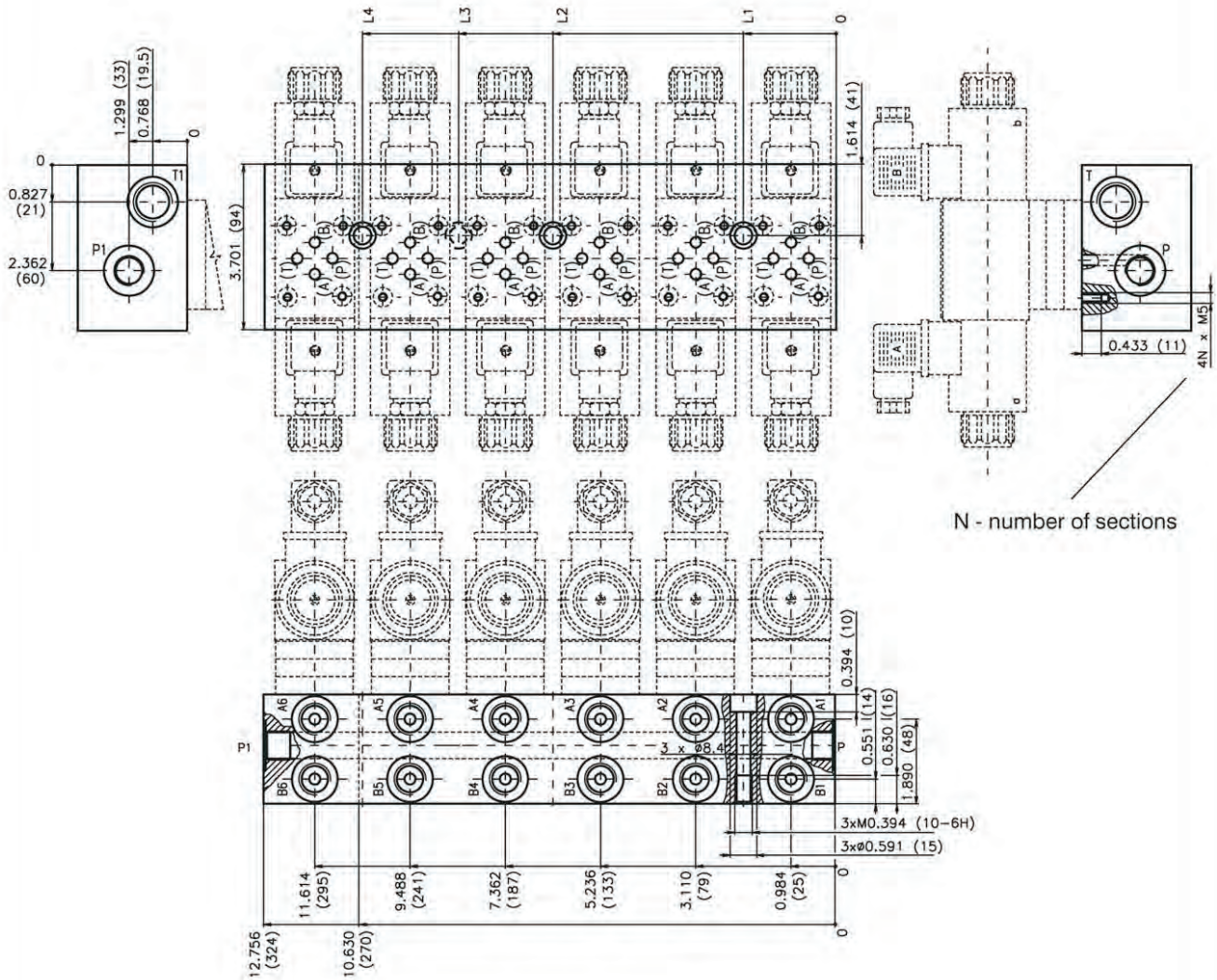
Port	A1...A4, B1...B4	P	P1	T	T1
Thread	G3/8	G3/8	G3/8	G1/2	G1/2
Depth of thread	0.512 (13)	0.512 (13)	0.512 (13)	0.670 (17)	0.670 (17)
Counterbore	Ø0.945 (24)	-	Ø1.118-0.008 (28.4-0.2)	-	Ø1.118-0.008 (28.4-0.2)
Depth of counterbore	0.020 (0.5)	-	0.083-0.004 (2.1-0.1)	-	0.083-0.004 (2.1-0.1)
O-Ring [mm]	-	-	23.4 x 2.62	-	23.4 x 2.62

Valve Dimensions

Dimensions in inches and millimeters (in brackets)

Plates with 5 ... 6 sections

Plates with 5 and 6 do not enable any other combinations



Number of sections	L1	L2	L3	L4
5	2.047 (52)	6.300 (160)	8.425 (214)	-
6	2.047 (52)	6.300 (160)	-	10.551 (268)

Port	A1...A6, B1...B6	P, P1	T, T1
Thread	G3/8	G3/8	G1/2
Depth of thread	0.512 (13)	0.512 (13)	0.670 (17)
Counterbore	Ø0.945 (24)	Ø1.108 (28)	Ø1.108 (28)
Depth of counterbore	0.020 (0.5)	0.020 (0.5)	0.020 (0.5)

