

Part number:

HYDROMA

HYDRAULICKÉ SYSTÉMY

**HIDROMA
SYSTEMS**

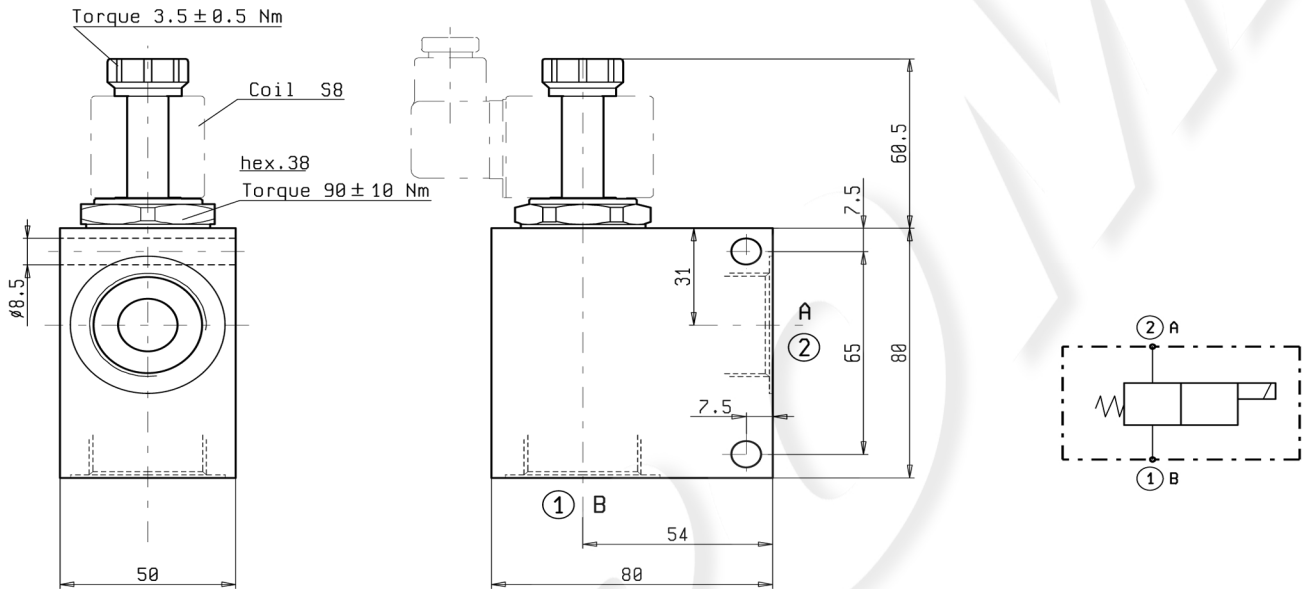
UKŁADY HYDRAULICZNE

HYDROMA

ГИДРАВЛИЧЕСКИЕ СИСТЕМЫ

**SOLENOID OPERATED CARTRIDGE VALVES IN MANIFOLD
2-WAY SIZE 12 SERIES 8A STANDARD MANIFOLD**

VEI-CS-8A-12



FEATURES - RATINGS

Maximum Operating Pressure 250 bar

- See cartridge data sheets for curves, features and functional details
- Standard manifolds in high strength aluminum. To order manifold only see page 6.01.01
- **IMPORTANT** : For working pressures up to 350 bar and for fatigue applications with any working pressure, steel manifolds are available upon request. To order steel manifold only see page 6.01.02
- **IMPORTANT** : Ordering code of cartridge in standard manifold models is the same of cartridge only models except for first couple of digits - **OS** instead of **OD** - and sixth couple of digits **Z** - PORT SIZE instead of **00**.
EXAMPLE : **OD.15.05.21.47.00 OS.15.05.21.47 - Z**

ORDERING CODE AND OPTIONS

OS - J - K - 21 - Y - Z

J	Same as cartridge code
K	Same as cartridge code
Y	Same as cartridge code

Z	Port Size
04	G 3/4
05	G 1

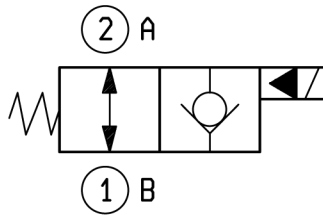
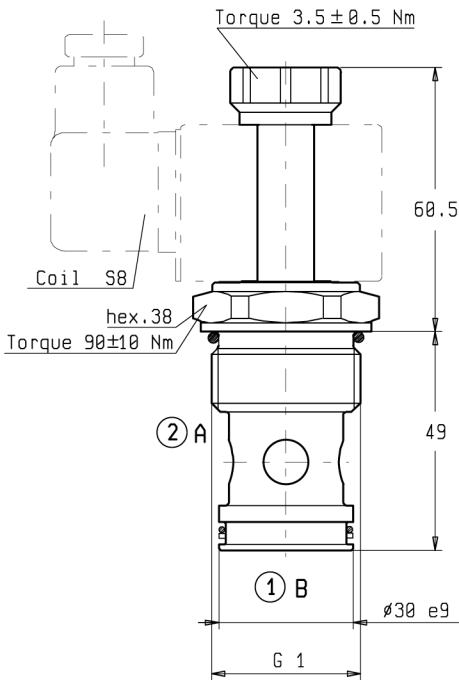
CARTRIDGES TO BE INSERTED

- OD.15.01.21. - Y - 00
- OD.15.02.21. - Y - 00
- OD.15.03.21. - Y - 00
- OD.15.04.21. - Y - 00
- OD.15.05.21. - Y - 00
- OD.15.06.21. - Y - 00
- OD.15.09.21. - Y - 00
- OD.15.10.21. - Y - 00
- OD.15.31.21. - Y - 00
- OD.15.32.21. - Y - 00

**SOLENOID OPERATED CARTRIDGE VALVES
POPPET 2-WAY NORMALLY OPEN**

VEI-8A-2A-12-NA-S

OD.15.06.21 - Y - 00



DESCRIPTION

Two way, pilot operated, normally open poppet style solenoid cartridge valves, designed for applications requiring virtually zero internal leakage.

OPERATION

When de-energized, flow is allowed in both directions. When energized, the poppet lowers blocking flow from A to B and allowing flow from B to A after overcoming the coil force. To operate push style manual override: push and hold override button. To operate push and twist style manual override: push override button, turn clockwise and release; the valve will remain closed.

FEATURES - RATINGS

Maximum Operating Pressure 350 bar

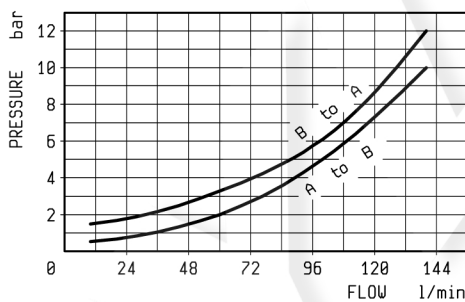
Rated Flow 150 l/min

- Cavity - Tooling (page 7.01.11) : 021-E
- Weight : 0.350 kg
- Fluids - Temperatures - Testing Conditions - Seals : see page 7.01.04
- Internal Leakage : see page 7.01.04
- Filtration : 25 µm nominal or better, see page 7.01.05
- Minimum Voltage Required : 90% of nominal
- Coils must be ordered separately, see page 1.71.05
- Mounting Position : unrestricted

ORDERING OPTIONS

Standard	Y = 17
Push Style Manual Override	Y = 18
Push and Twist Style Manual Override	Y = 19

PRESSURE DROP



RESPONSE TIME

