

Part number:

HYDROMA

HYDRAULICKÉ SYSTÉMY

**HIDROMA
SISTEMS**

UKŁADY HYDRAULICZNE

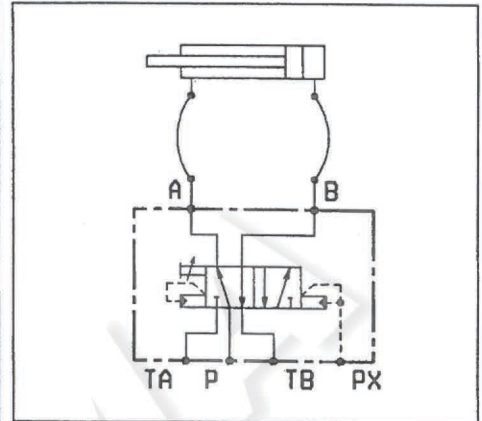
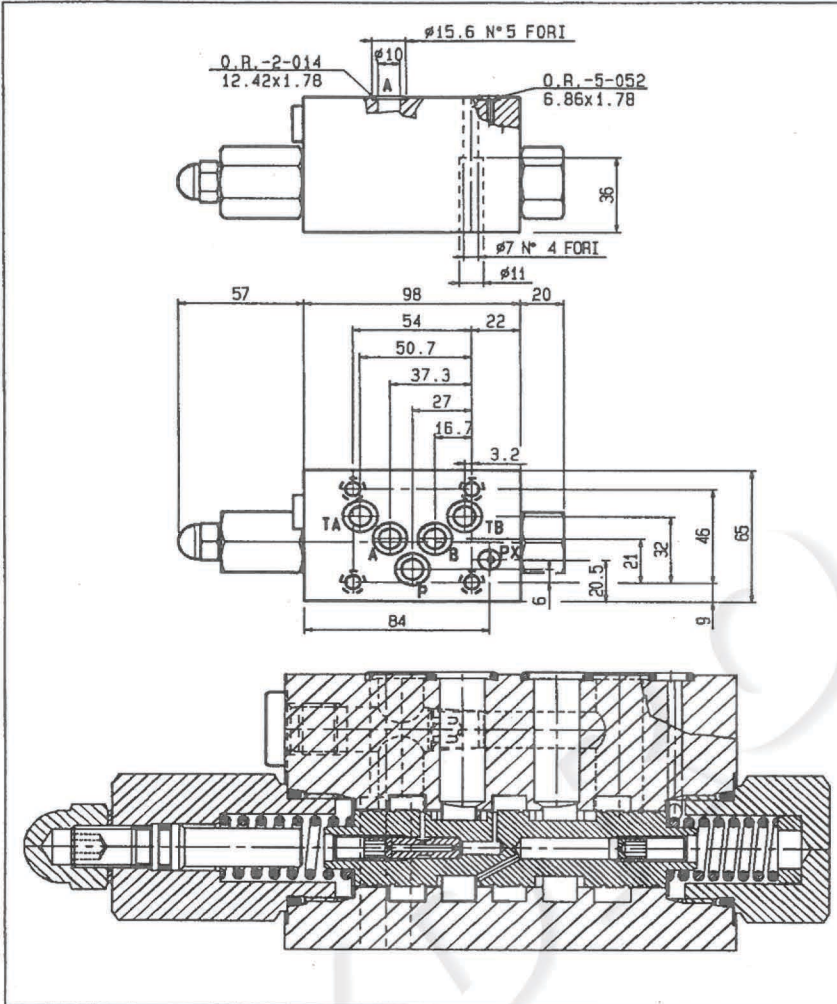
HYDROMA

ГИДРАВЛИЧЕСКИЕ СИСТЕМЫ

DIREZIONALI AUTOMATICHE
AUTOMATIC DIRECTIONAL

VDA-PA-RT-CR-F10-PX-A

08.90.70.03.43.00.00A



Pressione di lavoro max.
Max. working pressure 350 bar

Portata max.
Flow max. 80 l/min

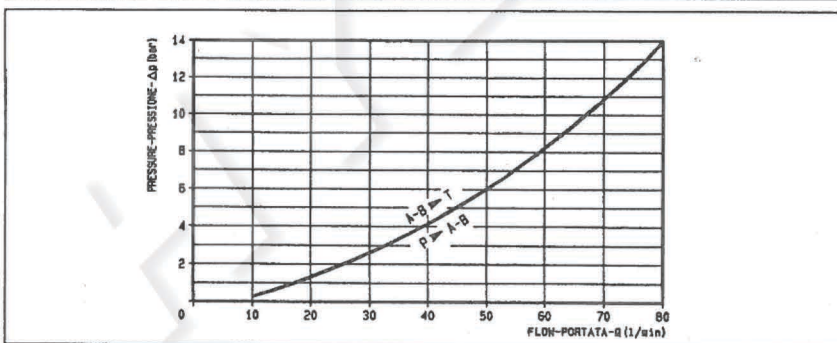
Peso
Weight. 2.9

Per il corretto funzionamento e' indispensabile un tratto (almeno 500 mm) di tubo flessibile tra l'attacco A e il cilindro. E' presente un dispositivo di blocco (vedi disegno) da avvitare per impedire l'inversione quando si deve tarare la valvola, dopo di che deve essere svitato.

The proper shifting performance is ensured by the presence of flexible hose, at least 500 mm long, on the line between port "A" and cylinder annular chamber. In order to prevent shifting while the system relief valve is being adjusted, use the locking screw (see drawing); the screw must be brought back up to rest position, once the adjustment has been made.

Classe di pulizia dell'olio: almeno 18/14 ISO 4406 (9 NAS-1638).

Fluid cleanliness class: 18/14 ISO 4406 (9 NAS-1638) or better.



ATTACCHI/PORT SIZE	
A - B - P - TA - TB	PX
CETOP 5 (F10)	∅ 3

DESIGN/cataloghi/A4/08907003430000A_0