

Part number:

006-10933

**HYDROMA**

HYDRAULICKÉ SYSTÉMY

**HIDROMA  
SISTEMS**

UKŁADY HYDRAULICZNE

**HYDROMA**

ГИДРАВЛИЧЕСКИЕ СИСТЕМЫ

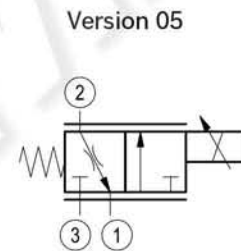
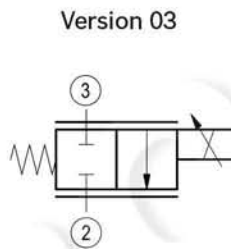
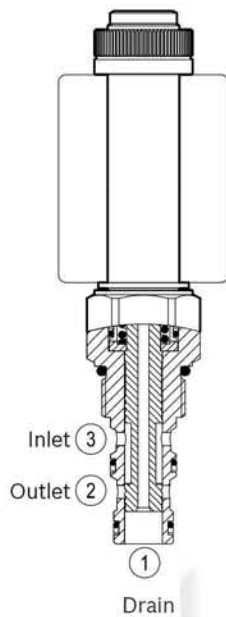
RE 18323-63/01.16 1/4  
Replaces: RE 18323-63/08.10

# Proportional valves not compensated flow regulator

Common cavity, Size 10

VEP-5A-2Q-09

OD.92 - X - 77 - Y - Z



Version 03: port 1 not used.

## General

Weight	kg (lbs)	0.32 (0.71)
Installation orientation		Optional
Ambient temperature range	°C (°F)	-30 to 60 (-22 to 140)

## Hydraulic

Max. operating pressure	bar (psi)	210 (3000)
Flow range	l/min.(gpm)	see flow diagram
Max. internal leakage (*)	cm <sup>3</sup> /min. (cu.in./min.)	100 (6)
Fluid temperature range	°C (°F)	-20 to 80 (-4 to 176)

Fluids Mineral-based or synthetics with lubricating properties at viscosities of 15 to 380 mm<sup>2</sup>/s (cSt)

Installation torque Nm (ft-lbs) 44-56 (33-41)

Recommended degree of fluid contamination Nominal value max. 10µm (NAS 8) ISO 4406 19/17/14

Cavity CA-10A-3N see RE 18325-70

Lines bodies and standard assemblies Please refer to section "Hydraulic integrated circuit" or consult factory

Seal kit code RG10A3010520100  
material no. R901111369

Seal kit coil code RG19A1PNBR7010  
material no. R934003964

Other technical data See data sheet RE 18350-50

(\*) Measure at 210 bar (3000 psi). Oil at 46 cSt.

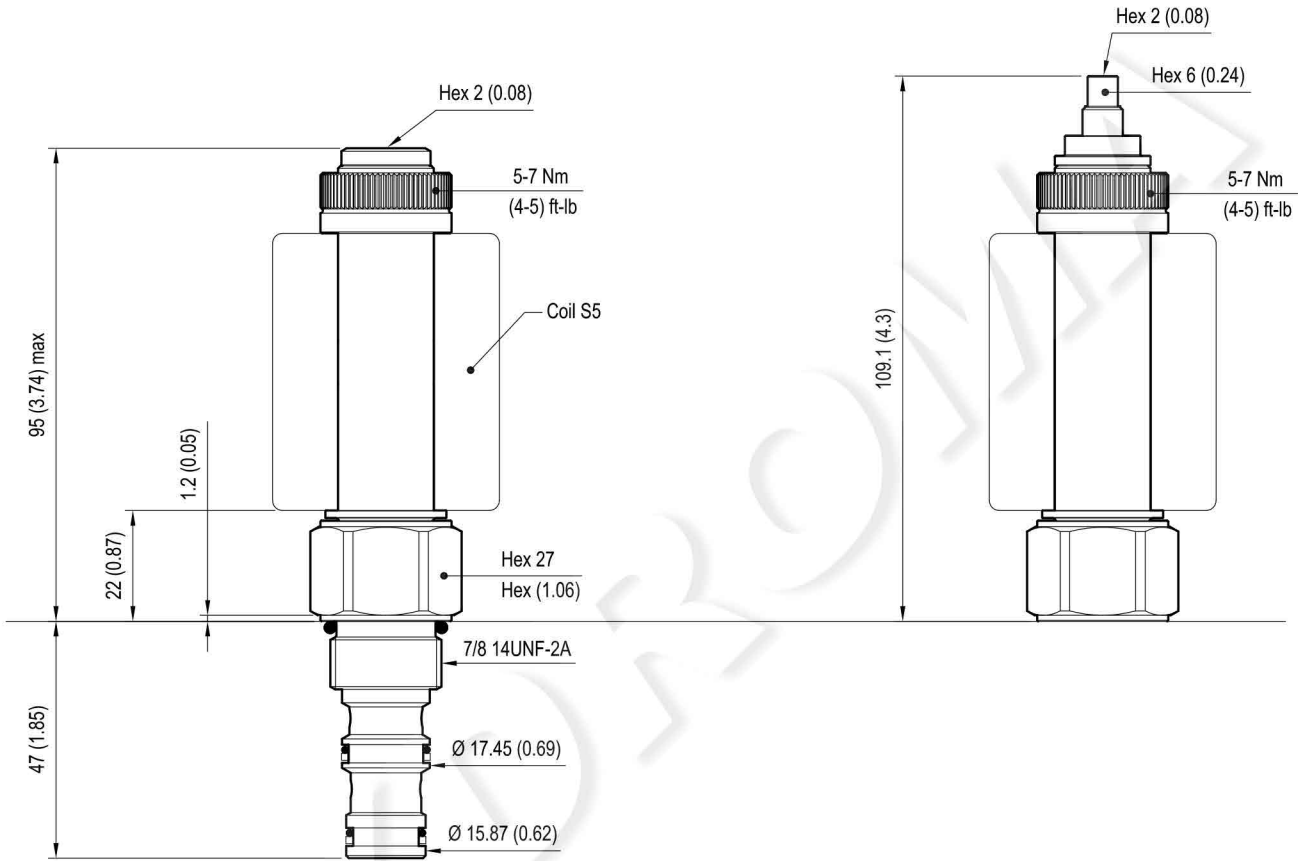
## Electrical

Type of voltage	DC voltage
Coil type	S5
Supply voltage	12 DC
Nominal voltage	± 10%
Power consumption	W 23
Duty cycle	% 100
Type of protection	See data sheet RE 18325-90

Note: Coils must be ordered separately.

# Dimensions

Proportional valves not compensated flow regulator

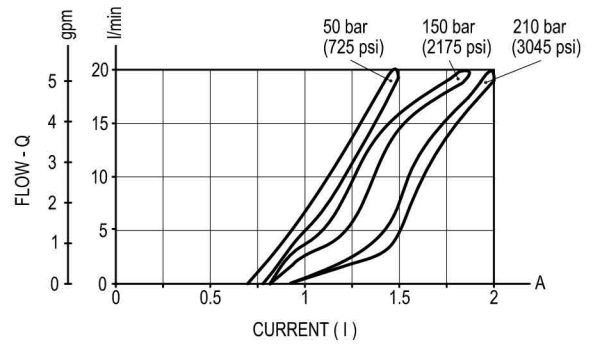
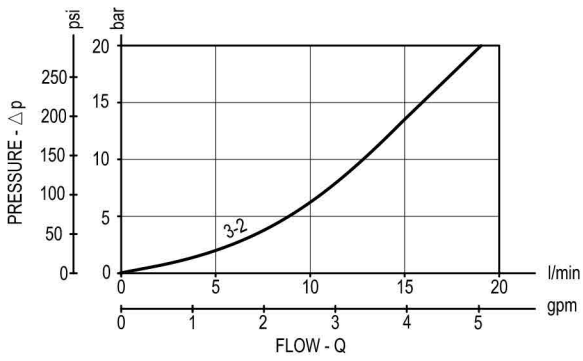


Version 03  
PORT NOT USED

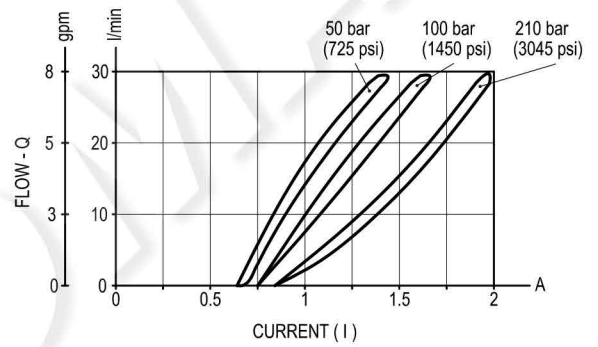
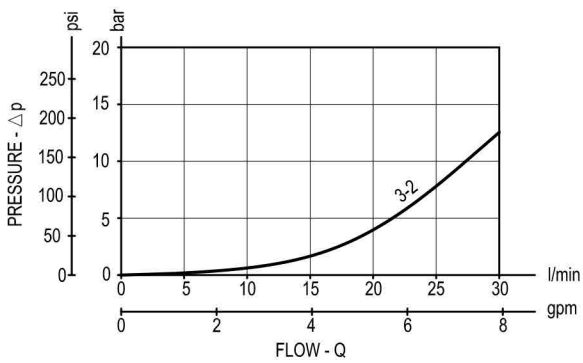
[ mm (Inches) ]

## Performance graphs

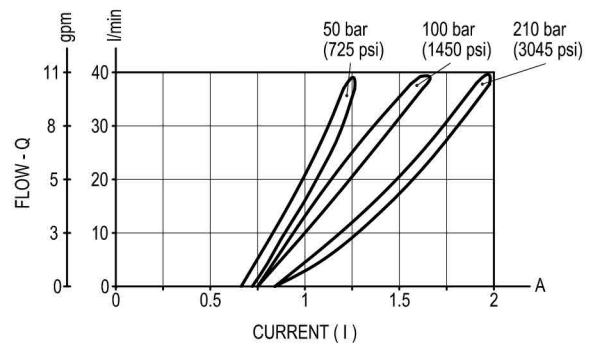
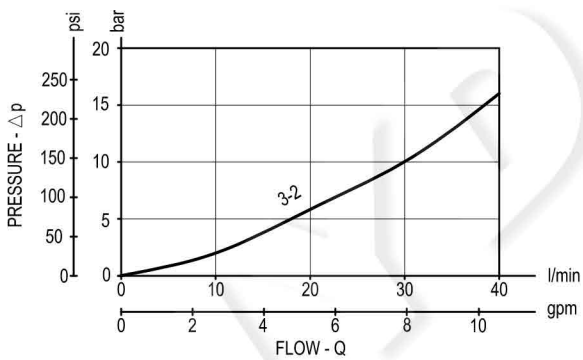
Z= 01



Z= 02



Z= 03



PMW Frequency: 120-150 Hz

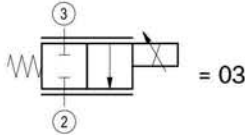
Hysteresis: < 5%

Note: It is recommended to use coil 12 DC.

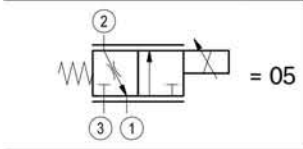
Ordering code

OD.92	X	77	Y	Z
-------	---	----	---	---

Proportional valves not compensated flow regulator



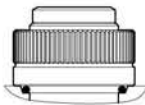
= 03



= 05

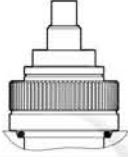
Operating range			
	Rated flow max l/min (gpm)	I Min. A (±10%)	I Max. A (±10%)
= 01	20 (6)	0.9	2
= 02	30 (8)	0.8	2
= 03	40 (11)	0.8	2

standard type



03 =

knob style manual override



04 =

Common cavity: CA-10A-3N

Type	Material number
OD920377030100	R934001518
OD920377030200	R934001519
OD920377030300	R934001520
OD920377040100	R934001521
OD920377040200	R934003909
OD920377040300	R934001522
OD920577030100	R934001524
OD920577030200	R934003130
OD920577030300	R934001525
OD920577040100	R934001526

Type	Material number
OD920577040200	R901176252
OD920577040300	R934001528