

Part number:

**HYDROMA**

HYDRAULICKÉ SYSTÉMY

**HIDROMA  
SYSTEMS**

UKŁADY HYDRAULICZNE

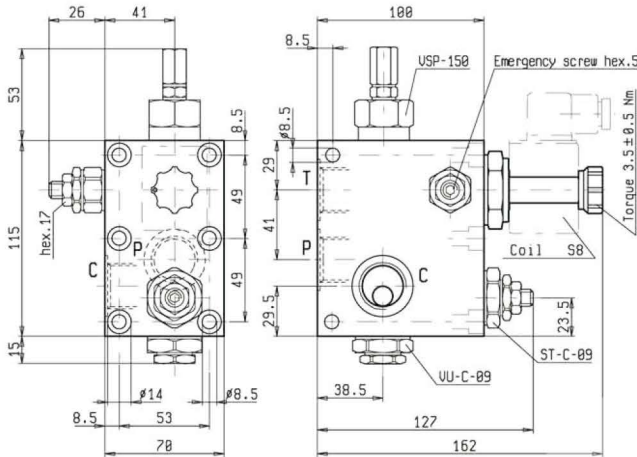
**HYDROMA**

ГИДРАВЛИЧЕСКИЕ СИСТЕМЫ

**STANDARD INTEGRATED CIRCUITS  
FOR SINGLE-ACTING CYLINDERS**

**VEI8A-VU-VS-ST-09**

**OL - K - Y - Z - W - 00**



**DESCRIPTION - OPERATION**

These blocks are typically used in hydraulic lifts with single acting cylinder.

With NC solenoid valve ( symbol 51 ) the load lifting is obtained by starting the pump and the lowering by energizing the solenoid valve; when the pump and the solenoid valve are off, the perfect load-holding is ensured.

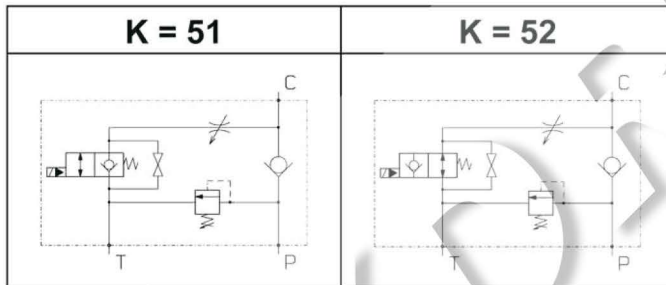
With NO solenoid valve ( symbol 52 ) features are reversed.

**FEATURES - RATINGS**

**Maximum Operating Pressure 250 bar**

**Rated Flow 70 l/min**

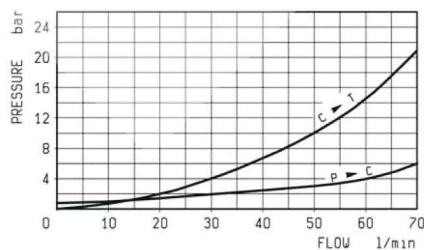
- Weight : 2.600 Kg
- Fluids - Temperatures - Testing Conditions - Seals : see page 7.01.04
- Internal Leakage : see page 7.01.04
- Filtration : 25 µm nominal or better, see page 7.01.05
- Minimum Voltage Required : 90% of nominal
- Coils must be ordered separately, see page 1.71.05
- Response Time : see page 1.11.46 and 1.12.46
- Sealing Cap for Relief Valve : Ordering code 03.05.01.004
- Manifolds in high-strength aluminum for working pressures up to 250 bar.
- Special steel manifolds can be supplied upon request for working pressures up to 350 bar and for fatigue cycle applications with any working pressure.



Y	PORT SIZE P - T - C
04	G 3/4

Z		SPRINGS			
Adj. press. Range bar	Std. Setting bar (Q=5 l/min)	Ordering code	Colour		
01	02	1.7-70	50	black	
04	05	7-105	100	blue	
07	08	10-210	200	green	
10	11	35-350	350	yellow	

PRESSURE DROP



W	MANUAL OVERRIDE OPTIONS	
	K = 51	K = 52
17	/	No Override
18	/	Push Style
19	/	Push and Twist Style
37	No Override	/
47	Knob Style	/