

Part number:

HYDROMA

HYDRAULICKÉ SYSTÉMY

**HIDROMA
SISTEMS**

UKŁADY HYDRAULICZNE

HYDROMA

ГИДРАВЛИЧЕСКИЕ СИСТЕМЫ

Line mount bodies

Line mount body

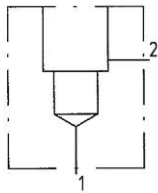
- for pressure relief valves in screw-in cartridge construction
- $p_{max} = 400 \text{ bar}$

M18x1,5
M22x1,5
M33x2
M42x2

VARIATIONS

Types

C02



TYPE CODE

Line mount body made of steel

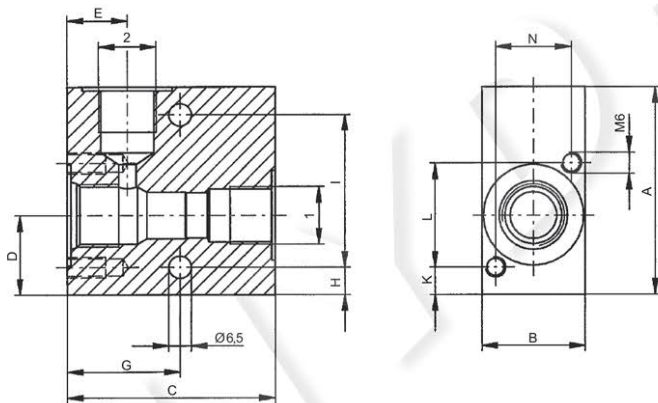
Port size	G 1/4"	<input type="text" value="G14"/>	G 3/8"	<input type="text" value="G38"/>
	G 1/2"	<input type="text" value="G12"/>	G 3/4"	<input type="text" value="G34"/>
	G 1 1/4"	<input type="text" value="G114"/>		
Cavity thread size	M18x1,5	<input type="text" value="18"/>	G 1/4" and G 3/8"	
	M22x1,5	<input type="text" value="22"/>	G 3/8" and G 1/2"	
	M33x2	<input type="text" value="33"/>	G 3/4"	
	M42x2	<input type="text" value="42"/>	G 1 1/4"	

Variations/Types C02

Design index (subject to change)

KG - C02 #

DIMENSIONS C02



TYPE C02

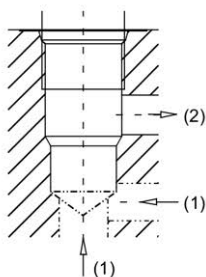
Ordering code	Size	Ports		Dimensions (in mm)											Wight
		1	2	A	B	C	D	E	G	H	I	K	L	N	
KG1418-C02	M18x1,5	G 1/4"	G 1/4"	60	30	60	23	17.3	32.5	8	44	8	30	22	0.65 kg
KG3818-C02	M18x1,5	G 3/8"	G 3/8"	60	30	60	23	17.3	32.5	8	44	8	30	22	0.65 kg
KG3822-C02	M22x1,5	G 3/8"	G 3/8"	60	45	60	23	22.5	40	8	44	8	30	32	1.05 kg
KG1222-C02	M22x1,5	G 1/2"	G 1/2"	60	45	60	23	22.5	40	8	44	8	30	32	1.05 kg
KG3433-C02	M33x2	G 3/4"	G 3/4"	80	50	80	32.5	30.5	50	11	58	10	45	34	2.05 kg
KG11442-C02	M42x2	G 1 1/4"	G 1 1/4"	100	60	100	40	33.5	62	11	79	12.5	55	44	3.60 kg

GENERAL SPECIFICATIONS

Description	Line mount body
Mounting	2 location holes 2 tapped holes
Connection	Threated connections
Mounting position	see valve data sheet
Surface protection	zinc coated

HYDRAULC SPECIFICATIONS

Peak pressure	$p_{max} = 400$ bar
---------------	---------------------

CARTRIDGE CAVITY

Type	Cavity according to:	For detailed cavity drawing see data sheet:
M18x1,5	ISO 7789-18-02-0-98	2.13-1001
M22x1,5	ISO 7789-22-02-0-98	2.13-1003
M33x2	ISO 7789-33-02-0-98	2.13-1041
M42x2	ISO 7789-42-02-0-07	2.13-1048

SCREW-IN CARTRIDGES INSTALLED

According to the type the following screw-in cartridges can be installed in the line mount bodies:

Type	Data sheet no.
M18x1,5	
BV.PM18	2.1-510
BS.PM18	2.1-520
BS.PM18-Z36	2.1-522
BVPPM18	2.3-510
BDPPM18	2.3-520
M22x1,5	
BV.PM22	2.1-530
BVTPM22	2.1-532
BVEPM22	2.1-536
BA.PM22	2.1-540
BK.PM22	2.1-542
BS.PM22-Z36	2.1-543
BVPPM22	2.3-530/529
BVVPM22	2.3-531
BVIPM22	2.3-532
BVCPM22	2.3-534
BVBPM22	2.3-535
BDPPM22	2.3-540/539
BDVPM22	2.3-541
BDIPM22	2.3-542
BDWPM22	2.3-543
BDCPM22	2.3-544
BDBPM22	2.3-545/546
M33x2	
BVPPM33	2.3-550/551
BVVPM33	2.3-552
M42x2	
BVPPM42	2.3-590

**CAUTION!**

The performance data refer to the screw-in cartridges only. The additional pressure drop in the line mount body must be taken into consideration.

Technical explanation see data sheet 1.0-100