

Part number:

**HYDROMA**

HYDRAULICKÉ SYSTÉMY

**HIDROMA  
SISTEMS**

UKŁADY HYDRAULICZNE

**HYDROMA**

ГИДРАВЛИЧЕСКИЕ СИСТЕМЫ

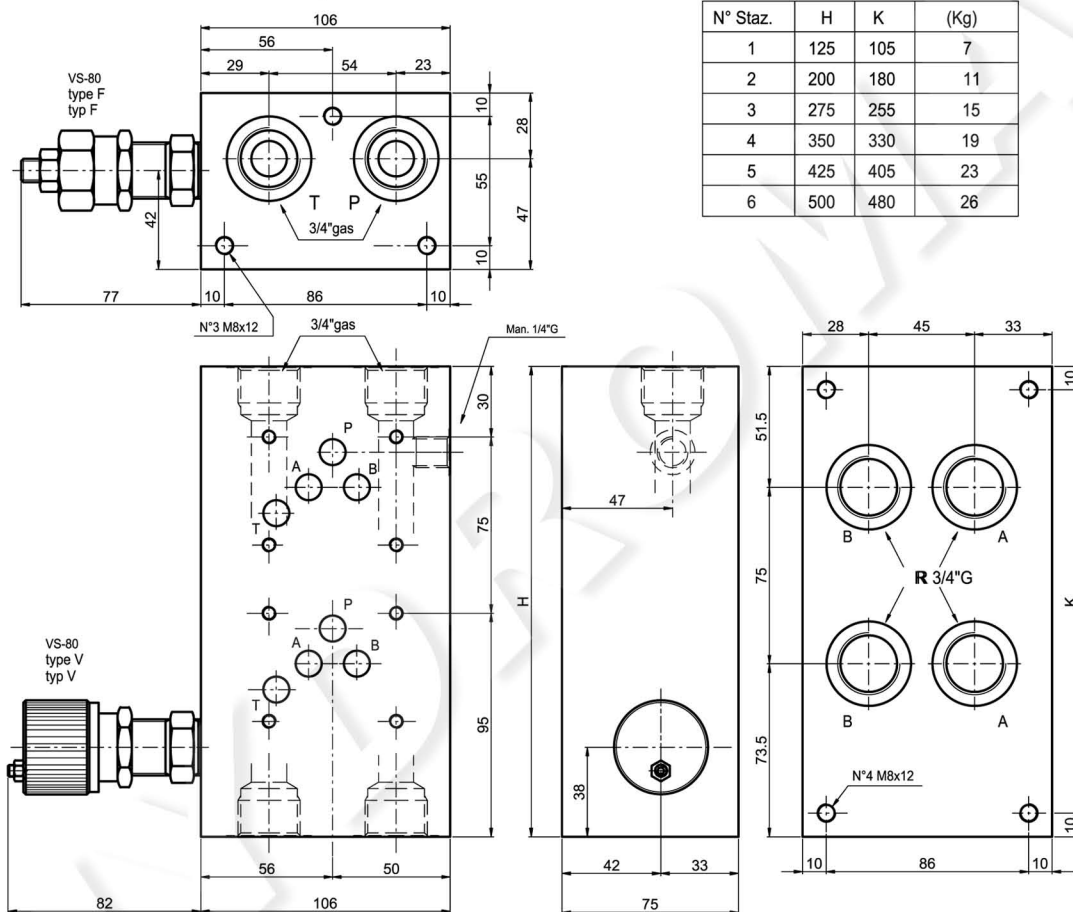
# MONOBLOCK

TYPE EM105/...

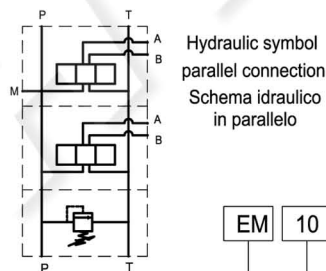
# MONOBLOCCO

TIPO EM105/...

Monoblock with ports A-B on rear = 3/4"G, P-T = 3/4"G.  
With/without pressure relief valve.(RV)  
Monoblocco con utilizzi A-B posteriori da 3/4"G, P-T da 3/4"G  
con/senza valvola limitatrice di pressione



N° Staz.	H	K	(Kg)
1	125	105	7
2	200	180	11
3	275	255	15
4	350	330	19
5	425	405	23
6	500	480	26



Monoblock = M  
ports A-B on rear = 10  
versione A-B posteriori =  
CETOP 5  
N° Elements = 1-2-3-4-5-6  
N° stazioni =

Ordering code:  
Esempio di ordinazione:



Setting/regolazione  
F = by key / A chiave  
V = Handwheel/Volantino

Spring type/tipo molla  
1 = 5-60 bar  
2 = 35-120 bar  
3 = 80-250 bar

Z = prearranged for RV  
= con sede per VLP  
T = with plugged RV seat  
= con sede tappata per VLP  
X = with RV included  
= con VLP inclusa

R 3/4"G = 34

# PRESSURE RELIEF VALVE - CAVITY PLUG

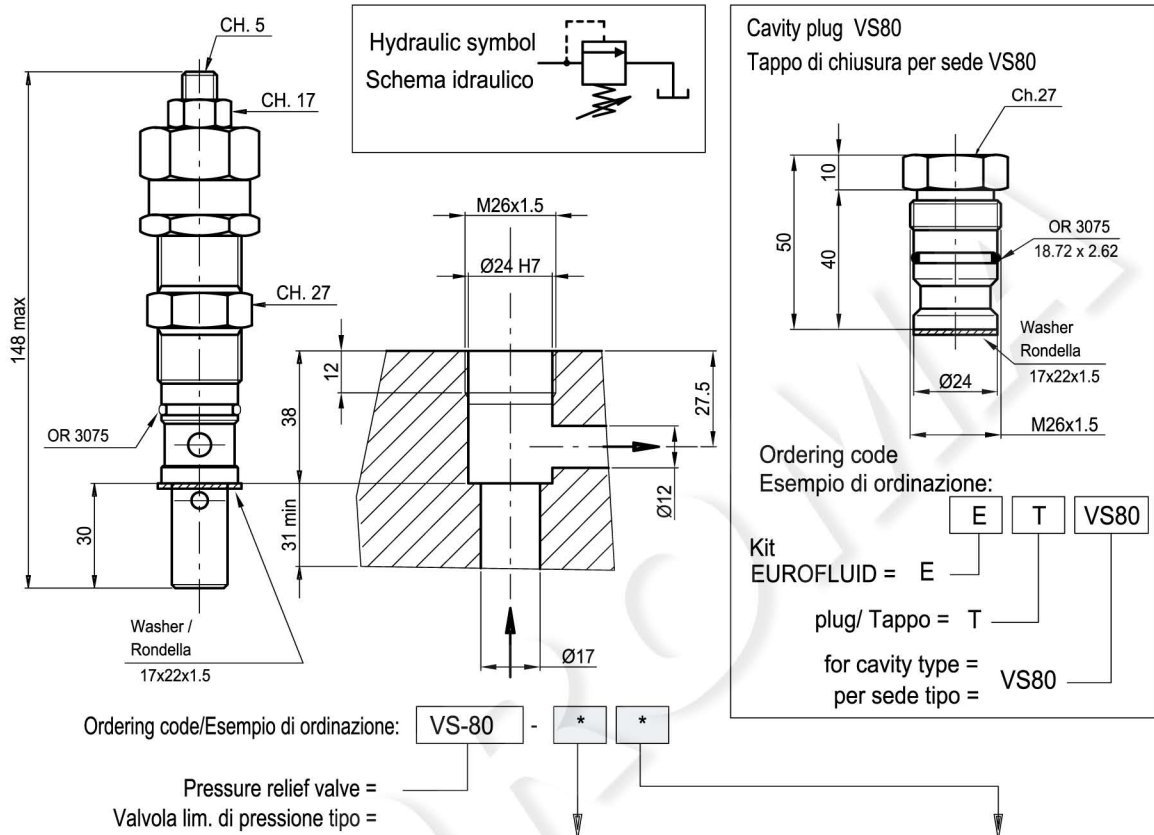
TYPE VS-80

# VALVOLA LIM. DI PRESSIONE - TAPPO SOST.

TIPO VS-80

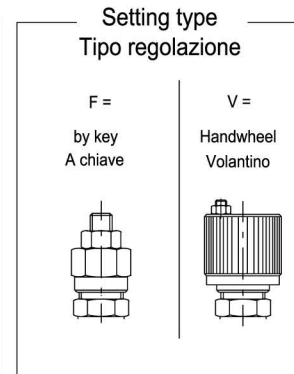
Pressure relief valve type : VS-80

Valvola limitatrice di pressione tipo : VS-80



Characteristics Caratteristiche	
Max. pressure. Press. max di esercizio	
250 bar	
Max. flow/Portata max.	
60 l/min	
weight/peso	
0.35 Kg	

SPRING TYPE/TIPO MOLLA				
N°	color colore	Setting range	Increase of pressure	standard setting
		campo di taratura min-max (bar)	incremento pressione bar/turn of screw bar/giro vite	taratura Q=5 l/min (bar)
1	black/nero	5-50	6	50
2	blue/blu	35-100	12	100
3	red/rosso	80-250	27	200



## PERFORMANCE - CURVE CARATTERISTICHE

