

Part number:

**HYDROMA**

HYDRAULICKÉ SYSTÉMY

**HIDROMA  
SISTEMS**

UKŁADY HYDRAULICZNE

**HYDROMA**

ГИДРАВЛИЧЕСКИЕ СИСТЕМЫ

Solenoid operated valves pilot operated poppet type  
2-way normally closed proximity sensor  
Special cavity, 021-E

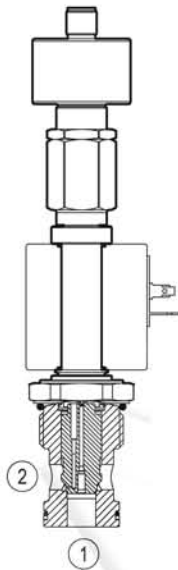
VESP-16G-16A/00-2A-N7

OD.15.05.21.65 - Y - Z

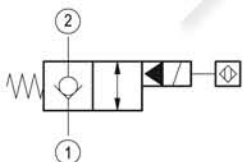
**RE 18325-05**

Edition: 01.2016

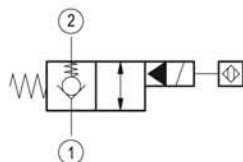
Replaces: 07.2015



▼ Version 04



▼ Version 84



### Technical data

#### General

Weight	0.9 kg (2 lbs)
Installation orientation	Optional
Ambient temperature range	-25 to 60 °C (-13 to 140 °F)

#### Hydraulic

Max. operating pressure	350 bar (5000 psi)
Flow range	5 - 150 l/min (1 - 40 gpm)
Max. internal leakage <sup>1)</sup>	20 drops/min.
Fluid temperature range	-20 to 80 °C (-4 to 176 °F)

Fluids: Mineral-based or synthetics with lubricating properties at viscosities of 15 to 380 mm<sup>2</sup>/s (cSt)

Installation torque	80 - 100 Nm (59 - 74 ft-lbs)
Recommended degree of fluid contamination	Nominal value max. 10 µm (NAS 8) ISO 4406 19/17/14
MTTFd	150 years see RE 18350-51
Special cavity	021-E see 18325-75
Lines bodies and standard assemblies	Please refer to section "Hydraulic integrated circuit" or consult factory

Seal kit	code	RG21E201052010
	material no.	R934003566

Other technical data See data sheet 18350-50

#### Electrical

Type of voltage	DC voltage
Coil type	S7 see 18325-90
Supply voltage	See data sheet 18325-90
Nominal voltage	± 10%
Power consumption	30 W
Duty cycle coil	100 % see 18325-90
Type of protection	See data sheet 18325-90

<sup>1)</sup> (cSt 46)

Please consider that a proper function of the valve is guaranteed only if the position of the monitor is not modified; each cartridge is provided of a torque confirmation mark, intended as anti-tampering device.

Sensor is protected against short circuit polarity inversion.

Ordering code

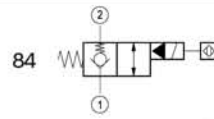
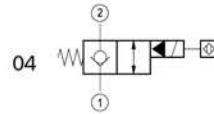
OD.15	05	21	65	Y	Z
-------	----	----	----	---	---

Solenoid operated valves  
pilot operated poppet type  
2-way normally closed proximity sensor

OB 12 V DC for Y=84

OC 24 V DC for Y=04 or 84

Note: please consult factory for different voltages.



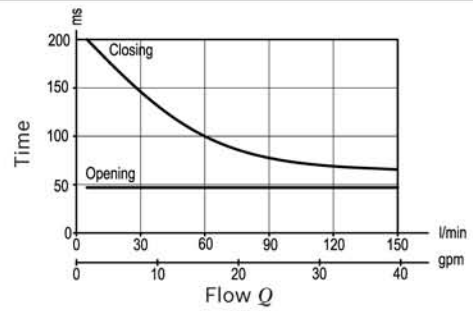
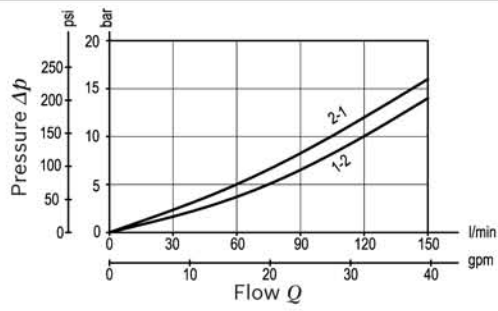
Special cavity: 021-E

Type	Material number
OD1505216504OC	R934004627
OD1505216584OB	R934004630
OD1505216584OC	R934004628

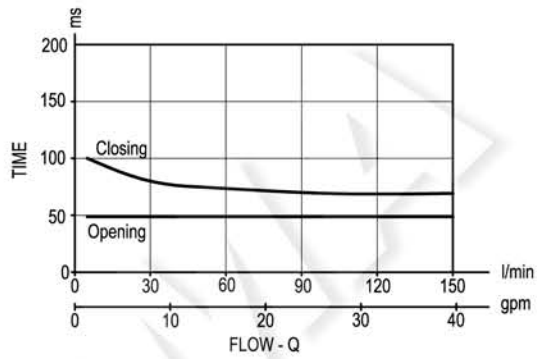
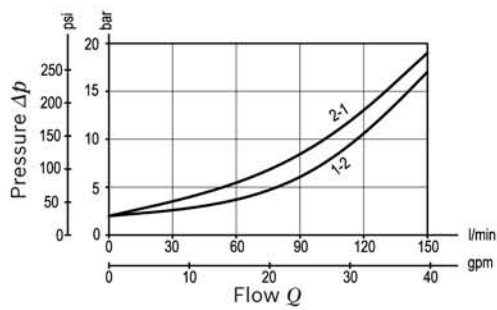
Type	Material number

**Characteristic curves**

**Version 04**

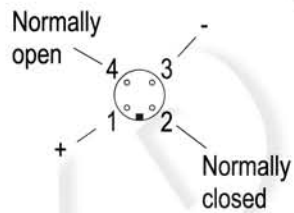
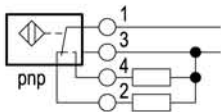


**Version 84**



**Sensor data:**

	12 V DC	24 V DC
Supply voltage	10.5 to 16	20 to 32
Output load	≤ 400 mA	≤ 400 mA



**Dimensions**

- ▼ Version 04-84: Solenoid operated valve, poppet 2-way normally closed proximity sensor

