

Part number:

HYDROMA

HYDRAULICKÉ SYSTÉMY

**HIDROMA
SYSTEMS**

UKŁADY HYDRAULICZNE

HYDROMA

ГИДРАВЛИЧЕСКИЕ СИСТЕМЫ

KAPPA 30 GENERAL DATA PUMPS**KP 30**

Pump type	Displacement	Max. pressure			Max. speed	Min. speed
		p ₁	p ₂	p ₃		
	in ³ /rev (cm ³ /rev)	psi (bar)			min ⁻¹	
KP 30•27	1.63 (26,7)	4060 (280)	4350 (300)	4495 (310)	3000	350
KP 30•34	2.11 (34,56)	3770 (260)	4060 (280)	4350 (300)	3000	350
KP 30•38	2.40 (39,27)	3770 (260)	4060 (280)	4350 (300)	3000	350
KP 30•43	2.68 (43,98)	3625 (250)	3915 (270)	4205 (290)	3000	350
KP 30•51	3.16 (51,83)	3335 (230)	3625 (250)	3915 (270)	2500	350
KP 30•56	3.45 (56,54)	3118 (215)	3408 (235)	3698 (255)	2500	350
KP 30•61	3.74 (61,26)	2900 (200)	3190 (220)	3480 (240)	2500	350
KP 30•73	4.50 (73,82)	2610 (180)	2900 (200)	3190 (220)	2500	350

p₁= Max. continuous pressurep₂= Max. intermittent pressurep₃= Max. peak pressure

The values in the table refer to unidirectional pumps.

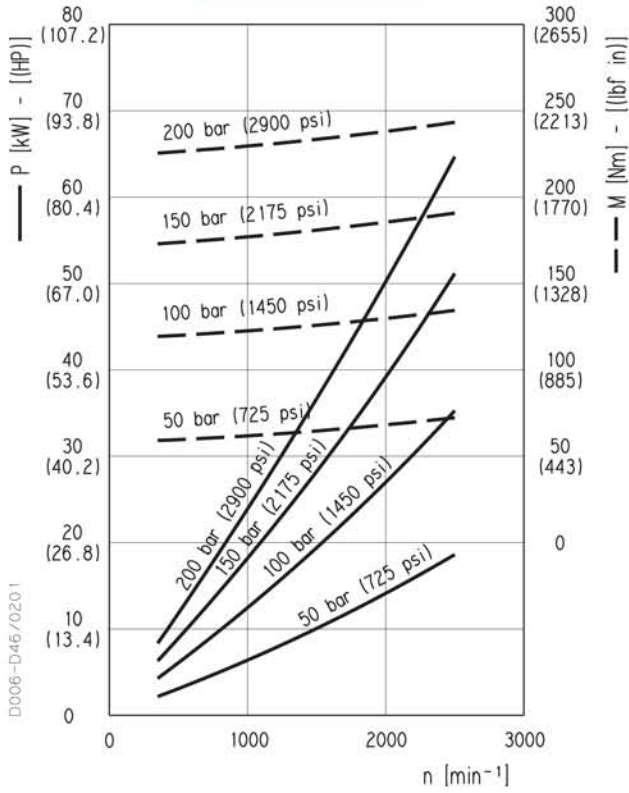
Reversible pump max pressures are 15% lower than those shown in table.

For different working conditions please consult our sales department.

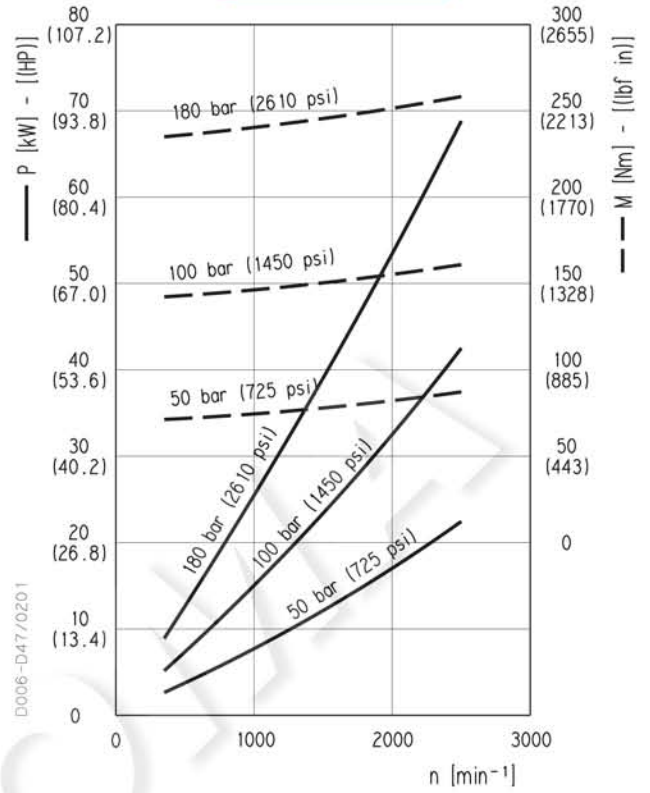
KAPPA 30 GEAR PUMPS PERFORMANCE CURVES

KP 30

KP 30•61



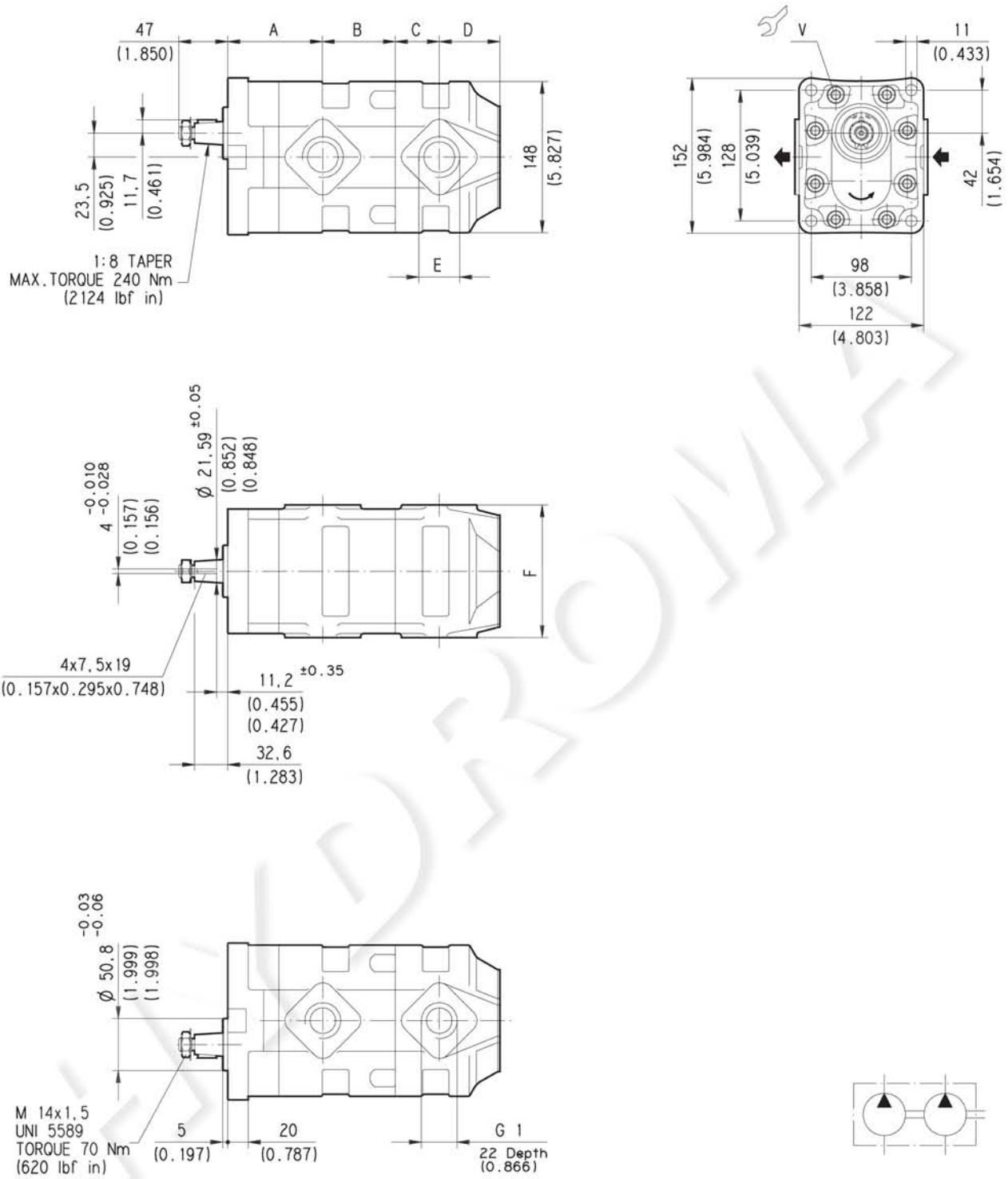
KP 30•73



01/03.2002

GAS STRAIGHT THREAD PORTS

British standard pipe parallel (55°) conforms to UNI - ISO 228



D006-D16/0605

02/06.2005

Pump type	A	B	C	D	E	F	Port code	
	mm (in)	mm (in)	mm (in)	mm (in)	mm (in)	mm (in)	IN	OUT
KP 30•27	85 (3.346)	63 (2.480)	35 (1.378)	48 (1.890)	G 1 Depth 22 (0.866)	130 (5.118)	GF	GF
KP 30•34	90 (3.543)		40 (1.575)					
KP 30•38	93 (3.661)		43 (1.693)					
KP 30•43	96 (3.780)		46 (1.811)					
KP 30•51	93 (3.661)	71 (2.795)	43 (1.693)	56 (2.205)				
KP 30•56	97 (3.819)	70 (2.756)	47 (1.850)	55 (2.165)				
KP 30•61	100 (3.937)		50 (1.969)					
KP 30•73	108 (4.252)		58 (2.283)		G 1 1/4 Depth 24 (0.945)	135 (5.315)	GG	GF

The length of a triple pump is obtained with the sum of the following dimensions: $A+B+C+B+C+D$.

How to order a triple pump

(for double pump omit the intermediate pump)

Pump type	Ports position	Ports IN/OUT	Rotation (1)	Seals (2)
KP 30•27	L	GF/GF		
Front pump				
30•27	L	GF/GF		
Intermediate pump				
30•27	L	GF/GF	S	-
Rear pump				

(1) Rotation: S= Left - D= Right

(2) For Buna N seals no code

ORDER EXAMPLE

Double pump **KP30•27-LGF/GF/30•27-LGF/GF S**

Triple pump **KP30•27-LGF/GF/30•27-LGF/GF/30•27-LGF/GF S**

02/06.2005