

Part number:

**HYDROMA**

HYDRAULICKÉ SYSTÉMY

**HIDROMA  
SISTEMS**

UKLADY HYDRAULICZNE

**HYDROMA**

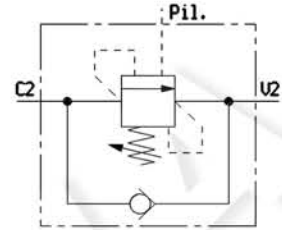
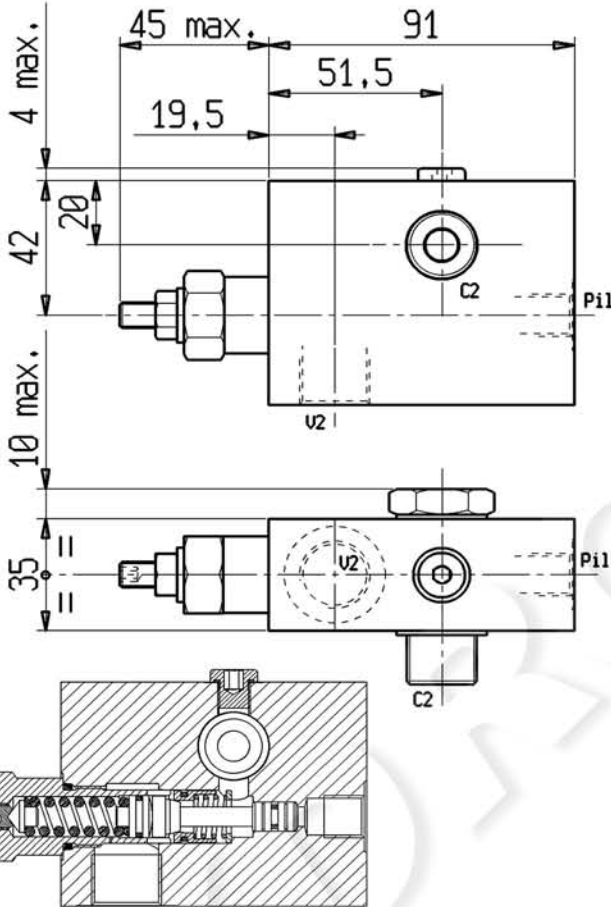
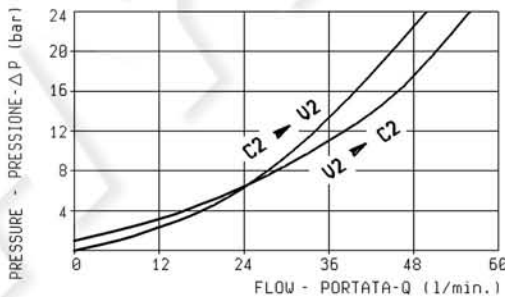
ГИДРАВЛИЧЕСКИЕ СИСТЕМЫ

BILANCIAMENTO, SEMPLICE EFFETTO, SERIE "30"  
FLANGIABILI

PILOT ASSISTED, FLANGEABLE, SERIES "30" OVERCENTRE

AUBS0-SE30-FCU-12-1:335B

08.41.03.10.03.35.00.B

Pressione di lavoro max.  
Max. working pressure 350 barPortata max.  
Flow max. 60 l/minPeso  
Weight. \*Rapporto di pilotaggio  
Pilot ratio 3 : 1Taratura della valvola: almeno 1,3 volte  
superiore alla pressione indotta dal carico  
Pressure setting: at least 1,3  
times the load induced pressureRAPPORTO DI PILOTAGGIO  
PILOT RATIO

3 : 1

## MOLLE/SPRINGS

Campo taratura min-max bar Adj. press. range bar	Incremento pressione bar/giro vite Pressure increase bar/turn	Taratura standard bar (0.5 l/min) Std. setting bar (made at 5 l/min)	Codice ordinazione Ordering code	Colore Colour
100-350	138	350	03.51.01.171	giallo yellow

## ATTACCHI/PORT SIZE

U2-C2

G 1/2