

Part number:

HYDROMA

HYDRAULICKÉ SYSTÉMY

**HIDROMA
SISTEMS**

UKŁADY HYDRAULICZNE

HYDROMA

ГИДРАВЛИЧЕСКИЕ СИСТЕМЫ

Solenoid operated valves pilot operated poppet type
2-way normally open - Industrial application
Common cavity, Size 08

VEI-16-08A-NA_I

OD.15 - X - 18 - Y - Z - 000I

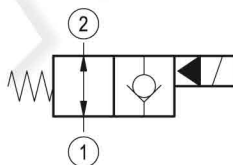
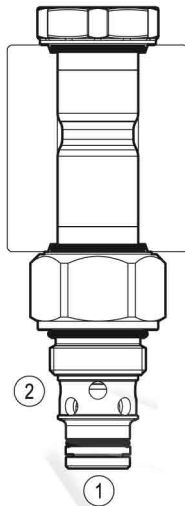
RE 18323-50

Edition: 01.2020

Replaces: 09.2019



PATENT PENDING



Technical data

New VEI-16 family incorporates a new solenoid concept providing excellent performance and enables cartridges to work in severe environment. Cartridges also incorporates advanced design of hydraulic parts providing excellent hydraulic performance.

Technical data

General	
Weight	0.15 kg (0.33 lbs)
Installation orientation	Unrestricted
Ambient temperature range	-30 to 90 °C (-22 to 194 °F)
Hydraulic	
Max. operating pressure	350 bar (5000 psi)
Flow range	0.5 - 40 l/min (0.1 - 11 gpm)
Fatigue cycle life	*10 million cycles at 280 bar 2 million cycles at 350 bar
Max. internal leakage:	5 drops/min. for X= 06
Switching time	Opening ≤ 50 ms Closing ≤ 100 ms
Fluid temperature range	-20 to 80 °C (-4 to 176 °F)
Fluids: Mineral-based or synthetics with lubricating properties at viscosities of 20 to 380 mm ² /s (cSt)	
Installation torque	39 - 51 Nm (29 - 38 ft-lbs)
Recommended degree of fluid contamination	Nominal value max. 10 µm (NAS 8) ISO 4406 19/17/14
MTTFD	150 years see RE 18350-51
Cavity	CA-08A-2N see 18325-70
Seal kit for X=06	code RG08A2010520100 material no. R901101437
Seal kit coil and standard cap	code RG02Z0010000100 material no. R930067869
Seal kit coil and standard cap only for Y=B	code RG03Z0010000100 material no. R930067870
Other technical data	See data sheet 18350-50

Electrical

Type of voltage	DC voltage
Coil type	D36
Supply voltage	See data sheet 18325-90
Power consumption	20 W
Type of protection	See data sheet 18325-90

Note: Coils must be ordered separately

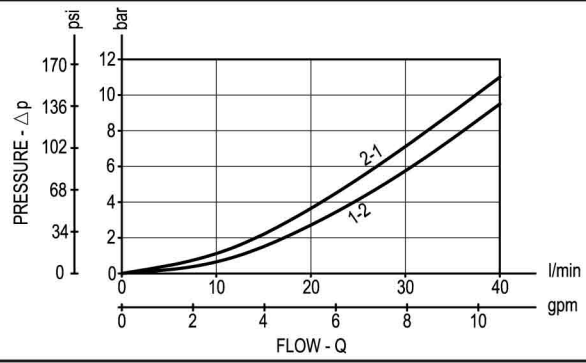
Valve function *:

1) after 10 mio cycles valve function guaranteed at nominal voltage.

2) max. internal leakage 70 ml/min. (0.0185 gpm/min).

Characteristic curves

Version 06



DRAFT

Dimensions**Solenoid operated valves, poppet 2-way
normally open - Industrial application**