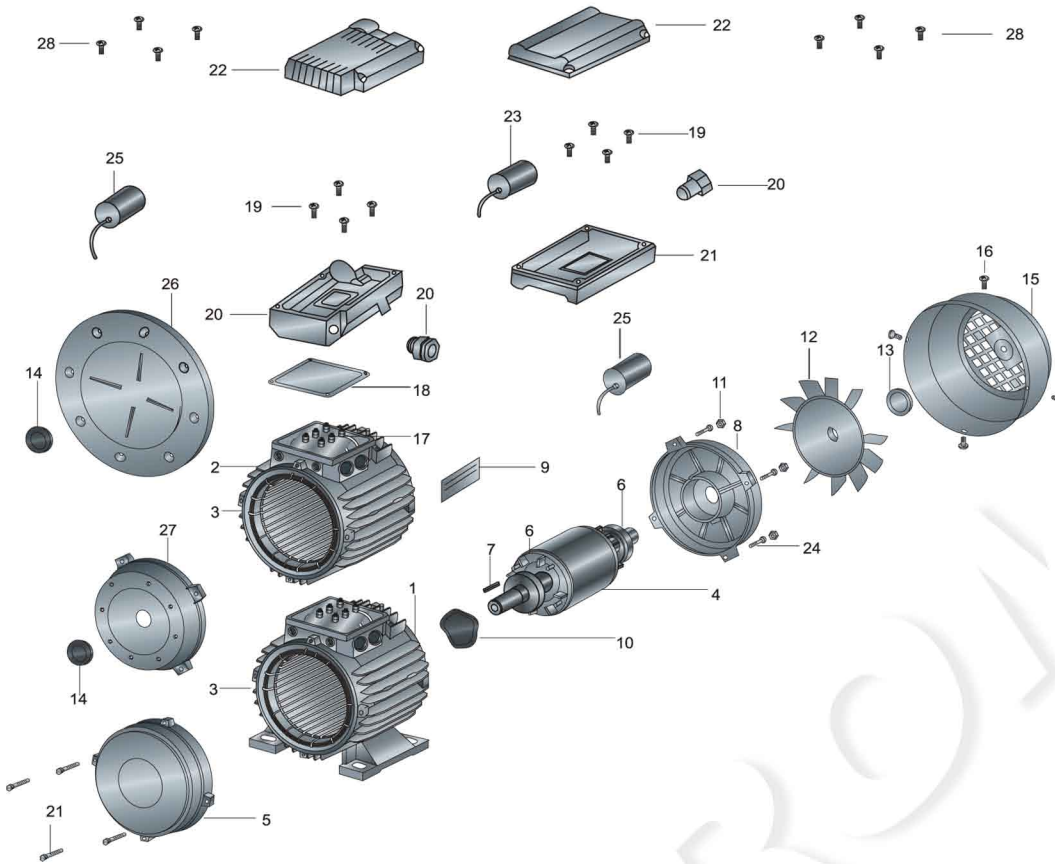


Part number:

## Motor spare part list/drawing



1. Frame B3
2. Frame B5
3. Wound Stator
4. Rotor with shaft
5. Front shield
6. Bearings
7. Key
8. Back shield
9. Name plate
10. Compensation ring
11. Bolts and nuts
12. Cooling fan
13. Fan clamping bushing
14. Rubber seal ring
15. Fan cover
16. Self-threading screws for fan cover fixing
17. Terminal board complete with components
18. Terminal seal IP55
19. Screws for terminal box fixing IP56
20. Cable press
21. Terminal box IP65(base)
22. Terminal box IP65(cover)
23. Run capacitor
24. Mounting studs screws
25. Start capacitor
26. Flange B5
27. Flange B14
28. Screws for terminal box fixing Ip55

## Mountings and positions

Mountings and positions for standard motors, according to IEC 60034-7, are defined by the codes mentioned in the following table.

	STANDARDS		FRAME SIZES	
	CEI 2-14	IEC 60034-7		
		Code I	Code II	56-132
	B3	IM B3	IM 1001	Standard
	B3/B5	IM B35	IM 2001	Standard
	B5	IM B5	IM 3001	Standard
	B14	IM B14	IM 4001	Standard
	B8	IM B8	IM 1071	Upon request
	B6	IM B6	IM 1051	Upon request
	B7	IM B7	IM 1061	Upon request

	STANDARDS		FRAME SIZES	
	CEI 2-14	IEC 60034-7		
		Code I	Code II	56-132
	V1	IM V1	IM 3011	Standard
	V3	IM V3	IM 3031	Upon request
	V5	IM V5	IM 1011	Upon request
	V6	IM V6	IM 1031	Upon request
	V1/V5	IM V15	IM 2011	Upon request

## Aluminum Housing Electric Motors Bearings& oilseals

Frame	Bearings		Oilseals		☆ Thread of Cable Gland
	Drive end	Non-drive end	Drive end	Non-drive end	
56	6201	6201	12x22x5	12x22x5	M16
63	6201	6201	12x24x7	12x24x7	M16
71	6202	6202	15x25x7	15x25x7	M20
80	6204	6204	20x34x7	20x34x7	M20
90S	6205	6205(6204)☆☆	25x37x7	25x37x7(20x34x7)☆☆	M25
90L	6205	6205(6204)☆☆	25x37x7	25x37x7(20x34x7)☆☆	M25
100L	6206	6206	30x42x7	30x42x7	M25
112M	6306	6206	30x42x7	30x42x7	M25
132S	6308	6208	40x58x8	40x58x8	M32
132M	6308	6208	40x58x8	40x58x8	M32
160M	6309	6309	45x65x8	45x65x8	M32
160L	6309	6309	45x65x8	45x65x8	M32

☆ Other standard is also available as per request.

☆☆ The figures in bracket “ ( ) ” is for the MC/ML single phase motors.

# MS

## SERIES THREE-PHASE ASYNCHRONOUS MOTORS ALUMINIUM HOUSING



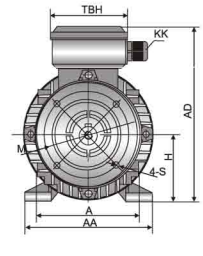
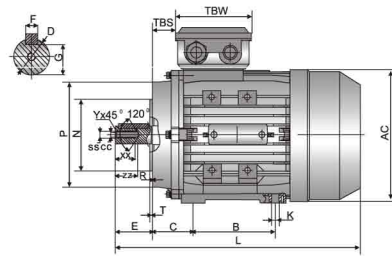
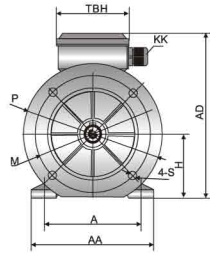
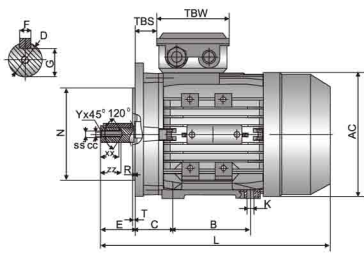
MS series aluminum housing three-phase asynchronous motors, with latest design in entirety, are made of selected quality materials and conform to the IEC standard. MS motors have good performance, safety and reliable operation, nice appearance, and can be maintained very conveniently, while with low noises, little vibration and at the same time light weight and simple construction. These series motors can be used for general drive.

### TECHNICAL DATA @50Hz

Model	Power (kW)	Current (A)			Current (A)			Current (A)			Speed (r/min)	Eff. (%)	Power Factor	Tstart/Tn (Times)	Tmax/Tn (Times)	Tmax/Tn (Times)	Is/In (Times)	Noise dB(A)	W.t. (Kg)
		220V	380V	660V	230V	400V	690V	240V	415V	720V									
MS561-2	0.09	0.64	0.37	0.21	0.61	0.35	0.20	0.58	0.34	0.19	2670	57	0.65	2.2	2.4	1.6	6	58	2.8
MS562-2	0.12	0.74	0.43	0.25	0.70	0.40	0.23	0.67	0.39	0.22	2730	62	0.69	2.2	2.4	1.6	6	58	3.2
MS563-2	0.18	1.0	0.58	0.34	0.96	0.56	0.32	0.93	0.54	0.31	2750	65	0.72	2.2	2.4	1.6	6	59	3.5
MS631-2	0.18	1.00	0.58	0.33	0.95	0.55	0.32	0.92	0.53	0.31	2710	63	0.75	2.2	2.4	1.6	6	61	4
MS632-2	0.25	1.29	0.75	0.43	1.23	0.71	0.41	1.19	0.69	0.40	2710	65	0.78	2.2	2.4	1.6	6	61	4.4
MS633-2	0.37	1.92	1.11	0.64	1.82	1.05	0.61	1.76	1.02	0.59	2710	65	0.78	2.2	2.4	1.6	6	62	4.9
MS711-2	0.37	1.76	1.02	0.59	1.67	0.97	0.56	1.61	0.93	0.54	2730	70	0.79	2.2	2.4	1.6	6	64	5.6
MS712-2	0.55	2.57	1.49	0.86	2.45	1.42	0.82	2.36	1.36	0.79	2760	71	0.79	2.2	2.4	1.6	6	64	6.1
MS713-2	0.75	3.33	1.93	1.11	3.18	1.83	1.06	3.06	1.77	1.02	2730	72	0.82	2.2	2.4	1.5	6	65	7
MS801-2	0.75	3.21	1.86	1.07	3.06	1.77	1.02	2.94	1.70	0.98	2770	73	0.84	2.2	2.4	1.5	6	67	9.1
MS802-2	1.1	4.56	2.64	1.52	4.35	2.51	1.45	4.18	2.42	1.39	2770	76.2	0.83	2.2	2.4	1.5	6	67	10.2
MS803-2	1.5	6.04	3.50	2.01	5.87	3.32	1.92	5.54	3.20	1.85	2800	78.5	0.83	2.2	2.4	1.5	6	70	11.7
MS90S-2	1.5	5.97	3.46	1.99	5.76	3.28	1.90	5.47	3.16	1.82	2840	78.5	0.84	2.2	2.4	1.5	6	72	12
MS90L1-2	2.2	8.39	4.85	2.80	8.0	4.61	2.66	7.69	4.45	2.56	2840	81	0.85	2.2	2.4	1.4	6	72	15
MS90L2-2	3	11.08	6.42	3.69	10.56	6.10	3.52	10.16	5.88	3.39	2840	82.6	0.86	2.2	2.4	1.4	6	74	18.5
MS100L1-2	3	10.96	6.34	3.65	10.44	6.03	3.48	10.04	5.81	3.35	2840	82.6	0.87	2.2	2.3	1.4	7	76	22.3
MS100L2-2	4	14.33	8.30	4.78	13.65	7.88	4.55	13.14	7.60	4.38	2850	84.2	0.87	2.2	2.3	1.4	7.5	77	25.2
MS112M-2	4	14.33	8.30	4.78	13.65	7.88	4.55	13.14	7.60	4.38	2880	84.2	0.87	2.2	2.3	1.4	7.5	77	26.7
MS112L-2	5.5	19.14	11.08	6.38	18.23	10.53	6.08	17.54	10.15	5.85	2880	85.7	0.88	2.2	2.3	1.2	7.5	78	30.2
MS132S1-2	5.5	19.14	11.08	6.38	18.23	10.53	6.08	17.54	10.15	5.85	2900	85.7	0.88	2	2.2	1.2	7.5	80	38.5
MS132S2-2	7.5	25.71	14.88	8.57	24.49	14.14	8.16	23.57	13.63	7.86	2920	87	0.88	2	2.2	1.2	7.5	80	42.2
MS132M1-2	9.2	30.86	17.85	10.28	29.87	17.25	9.96	28.26	16.34	9.42	2930	88	0.89	2	2.2	1.2	7.5	81	51.4
MS132M2-2	11	36.28	21.01	12.09	34.57	19.96	11.52	33.26	19.23	11.09	2930	88.4	0.9	2	2.2	1.2	7.5	83	58.8
MS160M1-2	11	36.28	21.01	12.09	34.57	19.96	11.52	33.26	19.23	11.09	2940	88.4	0.9	2	2.2	1.2	7.5	86	75
MS160M2-2	15	48.39	28.01	16.13	46.09	26.61	15.36	44.35	25.62	14.78	2940	89.4	0.91	2	2.2	1.2	7.5	86	88
MS160L-2	18.5	59.28	34.32	19.76	56.47	32.6	18.82	54.34	31.43	18.11	2940	90	0.91	2	2.2	1.1	7.5	86	99

Model	Power (KW)	Current (A)			Current (A)			Current (A)			Speed (r/min)	Eff. (%)	Power Factor	Tstart/Tn (Times)	Tmax/Tn (Times)	Tmin/Tn (Times)	Is/In (Times)	Noise dB(A)	W.t. (Kg)
		220V	380V	660V	230V	400V	690V	240V	415V	720V									
MS561-4	0.06	0.55	0.32	0.18	0.52	0.30	0.17	0.50	0.29	0.17	1320	48.5	0.59	2.3	2.4	1.7	6	50	3
MS562-4	0.09	0.77	0.45	0.26	0.74	0.43	0.25	0.71	0.41	0.24	1320	50	0.61	2.3	2.4	1.7	6	50	3.3
MS563-4	0.12	0.96	0.56	0.32	0.92	0.53	0.31	0.88	0.51	0.29	1320	52	0.63	2.2	2.4	1.7	6	51	3.5
MS631-4	0.12	0.86	0.50	0.29	0.82	0.47	0.27	0.79	0.46	0.26	1350	57	0.64	2.2	2.4	1.7	6	52	3.9
MS632-4	0.18	1.23	0.71	0.41	1.17	0.68	0.39	1.13	0.65	0.38	1350	59	0.65	2.2	2.4	1.7	6	52	4.3
MS633-4	0.25	1.66	0.96	0.55	1.58	0.91	0.53	1.52	0.88	0.51	1350	60	0.66	2.2	2.4	1.7	6	54	4.8
MS711-4	0.25	1.52	0.88	0.51	1.45	0.84	0.48	1.39	0.81	0.46	1350	60	0.72	2.2	2.4	1.7	6	55	5.4
MS712-4	0.37	2.02	1.17	0.67	1.92	1.11	0.64	1.85	1.07	0.62	1370	65	0.74	2.2	2.4	1.7	6	55	6.2
MS713-4	0.55	2.92	1.69	0.97	2.78	1.60	0.93	2.67	1.55	0.89	1380	66	0.75	2.2	2.4	1.7	6	57	7.3
MS801-4	0.55	2.87	1.66	0.96	2.74	1.58	0.91	2.63	1.52	0.88	1370	67	0.75	2.2	2.4	1.7	6	58	9
MS802-4	0.75	3.50	2.03	1.17	3.34	1.93	1.11	3.21	1.86	1.07	1380	72	0.78	2.2	2.4	1.5	6	58	10
MS803-4	1.1	4.86	2.81	1.62	4.63	2.67	1.54	4.45	2.57	1.48	1390	76.2	0.78	2.2	2.4	1.5	6	60	12.3
MS90S-4	1.1	4.80	2.78	1.60	4.57	2.64	1.52	4.40	2.54	1.47	1400	76.2	0.79	2.2	2.4	1.5	6	61	12.1
MS90L-4	1.5	6.27	3.63	2.09	5.97	3.45	1.99	5.75	3.32	1.92	1400	78.5	0.8	2.2	2.4	1.5	6	61	14.6
MS90L2-4	2.2	8.91	5.16	2.97	8.45	4.90	2.83	8.17	4.72	2.72	1400	81	0.8	2.2	2.4	1.	7	63	18.3
MS100L1-4	2.2	8.80	5.09	2.93	8.38	4.84	2.79	8.07	4.66	2.69	1420	81	0.81	2.2	2.3	1.5	7	64	21
MS100L2-4	3	11.77	6.81	3.92	11.21	6.47	3.74	10.79	6.24	3.60	1420	82.6	0.81	2.2	2.3	1.5	7	64	24.7
MS100L3-4	4	15.20	8.80	5.07	14.18	8.36	4.83	13.94	8.06	4.65	1430	84.2	0.82	2.2	2.2	1.5	7	65	29
MS112M-4	4	15.02	8.70	5.01	14.31	8.26	4.77	13.77	7.96	4.59	1430	84.2	0.83	2.2	2.2	1.5	7	65	30.5
MS112L-4	5.5	20.29	11.75	6.76	19.33	11.16	6.44	18.60	10.76	6.20	1440	85.7	0.83	2.2	2.2	1.4	7	68	34.8
MS132S-4	5.5	20.05	11.61	6.68	19.1	11.03	6.37	18.38	10.63	6.13	1450	85.7	0.84	2.2	2.2	1.4	7	71	40.4
MS132M-4	7.5	26.62	15.41	8.87	25.35	14.64	8.45	24.40	14.11	8.13	1450	87	0.85	2.2	2.2	1.4	7	71	49.6
MS132L1-4	9.2	32.46	18.79	10.82	30.92	17.85	10.31	29.76	17.21	9.92	1460	87.5	0.85	2.2	2.2	1.4	7.5	74	56.6
MS132L2-4	10	35.08	20.31	11.69	33.42	19.3	11.14	32.16	18.60	10.72	1460	88	0.85	2.2	2.2	1.4	7.5	74	58.6
MS132L3-4	11	37.97	21.98	12.66	36.17	20.88	12.06	34.81	20.13	11.60	1460	88.4	0.86	2.2	2.2	1.4	7.5	74	64
MS160M-4	11	37.54	21.73	12.51	35.76	20.64	11.92	34.41	19.90	11.47	1460	88.4	0.87	2.2	2.2	1.4	7	75	78
MS160L-4	15	51.18	29.63	17.06	48.76	28.15	16.25	46.92	27.13	15.64	1460	88.4	0.87	2.2	2.2	1.4	7.5	75	98
MS631-6	0.09	0.92	0.53	0.31	0.88	0.51	0.29	0.85	0.49	0.28	840	42	0.61	2	2	1.5	3.5	50	4.2
MS632-6	0.12	1.129	0.65	0.38	1.08	0.62	0.36	1.03	0.60	0.34	850	45	0.62	2	2	1.5	3.5	50	4.8
MS711-6	0.18	1.28	0.74	0.43	1.22	0.70	0.41	1.17	0.68	0.39	880	56	0.66	1.6	1.7	1.5	4	52	6
MS712-6	0.25	1.6	0.92	0.53	1.51	0.87	0.50	1.46	0.84	0.49	900	59	0.7	2.1	2.2	1.5	4	52	6.5
MS713-6	0.37	2.31	1.34	0.77	2.2	1.27	0.73	2.11	1.22	0.70	890	61	0.69	2	2.1	1.5	4	54	7.2
MS801-6	0.37	2.24	1.30	0.75	2.13	1.23	0.71	2.05	1.19	0.68	900	62	0.7	1.9	1.9	1.5	4	56	8.2
MS802-6	0.55	2.99	1.73	1.00	2.85	1.65	0.95	2.74	1.59	0.91	900	67	0.72	2	2.3	1.5	4	56	9.9
MS803-6	0.75	4.02	2.33	1.34	3.83	2.21	1.28	3.69	2.13	1.23	900	68	0.72	2	2.3	1.5	4	58	11.3
MS90S-6	0.75	3.96	2.29	1.32	3.77	2.18	1.26	3.63	2.10	1.21	920	69	0.72	2.2	2.2	1.5	5.5	59	11.7
MS90L-6	1.1	5.49	3.18	1.83	5.23	3.02	1.74	5.03	2.91	1.68	925	72	0.73	2.2	2.2	1.3	5.5	59	15.1
MS100L-6	1.5	7.00	4.05	2.33	6.67	3.85	2.22	6.42	3.71	2.14	945	74	0.76	2.2	2.2	1.3	6	61	19.1
MS112M-6	2.2	9.74	5.64	3.25	9.28	5.36	3.09	8.93	5.16	2.98	955	78	0.76	2.2	2.2	1.3	6	64	25.4
MS132S-6	3	13.11	7.59	4.37	12.49	7.21	4.16	12.02	6.95	4.01	960	79	0.76	2	2	1.3	6.5	64	36.1
MS132M1-6	4	17.16	9.93	5.72	16.35	9.44	5.45	15.73	9.10	5.24	960	80.5	0.76	2	2	1.3	6.5	68	45
MS132M2-6	5.5	22.58	13.08	7.53	21.51	12.42	7.17	20.70	11.97	6.90	960	83	0.77	2	2	1.3	6.5	68	55.5
MS132L-6	7.5	30.07	17.41	10.02	28.65	16.54	9.55	27.57	15.94	9.19	960	85	0.77	2	2	1.3	6.5	68	60
MS160M-6	7.5	28.61	16.56	9.54	27.25	15.73	9.08	26.22	15.17	8.74	960	86	0.8	2	2.2	1.3	6.5	68	72
MS160L-6	11	41.76	24.18	13.92	39.78	22.97	13.26	38.28	22.14	12.76	960	87.5	0.79	2	2.2	1.3	6.5	73	92
MS711-8	0.09	0.88	0.51	0.29	0.84	0.48	0.28	0.81	0.47	0.27	680	48	0.56	1.5	1.7	1.3	3	50	6
MS712-8	0.12	1.05	0.61	0.35	1.00	0.58	0.33	0.96	0.55	0.32	690	51	0.59	1.6	1.7	1.3	2.7	50	6.8
MS801-8	0.18	1.52	0.88	0.51	1.45	0.84	0.48	1.39	0.80	0.46	680	51	0.61	1.5	1.7	1.3	2.8	52	9.9
MS802-8	0.25	1.92	1.11	0.64	1.83	1.06	0.61	1.76	1.02	0.59	680	56	0.61	1.6	2	1.3	2.7	52	10.9
MS803-8	0.37	2.45	1.42	0.82	2.33	1.35	0.78	2.24	1.30	0.75	680	63	0.63	1.6	1.8	1.3	2.8	56	14.8
MS90S-8	0.55	3.36	1.95	1.12	3.21	1.85	1.07	3.08	1.78	1.03	680	66	0.65	1.6	1.8	1.3	3	56	17.2
MS100L1-8	0.75	4.45	2.58	1.48	4.24	2.45	1.41	4.08	2.36	1.36	710	66	0.67	1.7	2.1	1.3	3.5	59	17.5
MS100L2-8	1.1	5.81	3.36	1.94	5.54	3.20	1.85	5.33	3.08	1.78	710	72	0.69	1.7	2.1	1.2	3.5	59	19.7
MS112M-8	1.5	7.82	4.53	2.61	7.45	4.30	2.48	7.17	4.15	2.39	710	74	0.68	1.8	2.1	1.2	4.2	61	25.6
MS132S-8	2.2	10.84	6.28	3.61	10.33	5.96	3.44	9.94	5.75	3.31	720	75	0.71	2	2	1.2	5.5	64	35.5
MS132M-8	3	14.01	8.11	4.67	13.34	7.70	4.45	12.84	7.43	4.28	720	77	0.73	2	2	1.2	5.5	64	45
MS160M1-8	4	17.97	10.41	5.99	17.12	9.89	5.71	16.48	9.53	5.49	730	80	0.73	1.9	2.1	1.2	6	68	60
MS160M2-8	5.5	23.36	13.52	7.79	22.25	12.85	7.42	21.41	12.38	7.14	720	83.5	0.74	2	2.2	1.2	6	68	72
MS160L-8	7.5	30.87	17.87	10.29	29.41	17.0	9.8	28.30	16.37	9.43	720	85	0.75	1.9	2.2	1.2	6	68	92





**B35 Overall & Installation Dimensions**

160M/L	160	Φ300	Φ250	Φ350	5.0	0	Φ19											254	210/254	108	Φ42	110	12		
132M/L	132	Φ265	Φ230	Φ300	4.0	0	Φ15	Φ215	Φ180	Φ250	4.0	0	Φ15	216	178	89	Φ38	80	10						
132S	132	Φ265	Φ230	Φ300	4.0	0	Φ15	Φ215	Φ180	Φ250	4.0	0	Φ15	216	140	89	Φ38	80	10						
112	112	Φ215	Φ180	Φ250	4.0	0	Φ15	Φ165	Φ130	Φ200	3.5	0	Φ12	190	140	70	Φ28	60	8						
100★★	100	Φ215	Φ180	Φ250	4.0	0	Φ15	Φ165	Φ130	Φ200	3.5	0	Φ12	160	140	63	Φ28	60	8						
90L1/L2	90	Φ165	Φ130	Φ200	3.5	0	Φ12	Φ130	Φ110	Φ160	3.5	0	Φ12	140	125	56	Φ24	50	8						
90S	90	Φ165	Φ130	Φ200	3.5	0	Φ12	Φ130	Φ110	Φ160	3.5	0	Φ12	140	100	56	Φ24	50	8						
80	80	Φ165	Φ130	Φ200	3.5	0	Φ12	Φ130	Φ110	Φ160	3.5	0	Φ10	125	100	50	Φ19	40	6						
71★★	71	Φ130	Φ110	Φ160	3.5	0	Φ10	Φ115	Φ95	Φ140	3.0	0	Φ10	112	90	45	Φ14	30	5						
63	63	Φ115	Φ95	Φ140	3.0	0	Φ10							100	80	40	Φ11	23	4						
56	56	Φ98	Φ80	Φ120	3.0	0	Φ7							90	71	36	Φ9	20	3						
FRAME	H	N	M	P	T	R	S	M	N	P	T	R	S	A	B	C	D	E	F						
		B35						B35R																	

160M/L	37	15x19	2-M32X1.5	290	390	Φ320	640	652	705	795	64	143	146	M16	35	42	14.2	2				
132M/L	33	12x16	2-M25X1.5	252	325	Φ270	474/500	484/510	564/590	648/674	38	112	119	M12	28	34	10.2	1.5				
132S	33	12x16	2-M25X1.5	252	325	Φ270	436	468	553	636	38	112	119	M12	28	34	10.2	1.5				
112	24	12x16	2-M25X1.5	220	292	Φ230	395	410	483	455	32	112	119	M10	22	28	8.5	1.5				
100★★	24	10x13	1-M20X1.5	196	252	Φ205	368(386)	392(410)	474	445	26	105	105	M10	22	28	8.5	1.5				
90L1/L2	20	10x13	1-M20X1.5	175	235	Φ185	335/365	345/375	392	463	30	105	105	M8	20	25	6.8	1				
90S	20	10x13	1-M20X1.5	175	235	Φ185	310	320	367	448	30	105	105	M8	20	25	6.8	1				
80	15.5	10x13	1-M20X1.5	160	217	Φ165	290	300	353	390	27	105	105	M6	16	22	5	1				
71★★	11	7x10	1-M20X1.5	132	188/180	Φ145	240(254)	252(267)	307	345	20/27	94/80	94/80	M5	12	18	4.2	0.8				
63	8.5	7x10	1-M16X1.5	120	173/165	Φ130	215	232	265	283	14/21	94/80	94/80	M4	10	15	3.3	0.8				
56	7.2	5.8x5.8	1-M16X1.5	110	156/151	Φ120	195					14/21	88/73	88/73	M3	8	12	2.5	0.5			
FRAME	G	K	KK	AA	AD	AC	L	Lcc <sup>±</sup>	Lccl <sup>±</sup>	Lca <sup>±</sup>	TBS	TBW	TBH	SS	XX	ZZ	CC	Y				

**B34 Overall & Installation Dimensions**

132M/L	132	216	178	89	Φ38	80	10	33	12x16	2-M25X1.5	Φ165	Φ130	Φ200	3.5	0	M10	Φ215	Φ180							
132S	132	216	140	89	Φ38	80	10	33	12x16	2-M25X1.5	Φ165	Φ130	Φ200	3.5	0	M10	Φ215	Φ180							
112	112	190	140	70	Φ28	60	8	24	12x16	2-M25X1.5	Φ130	Φ110	Φ160	3.5	0	M8	Φ165	Φ130							
100★★	100	160	140	63	Φ28	60	8	24	10x13	1-M20X1.5	Φ130	Φ110	Φ160	3.5	0	M8	Φ165	Φ130							
90L1/L2	90	140	125	56	Φ24	50	8	20	10x13	1-M20X1.5	Φ115	Φ95	Φ140	3.0	0	M8	Φ130	Φ110							
90S	90	140	100	56	Φ24	50	8	20	10x13	1-M20X1.5	Φ115	Φ95	Φ140	3.0	0	M8	Φ130	Φ110							
80	80	125	100	50	Φ19	40	6	15.5	10x13	1-M20X1.5	Φ100	Φ80	Φ120	3.0	0	M6	Φ130	Φ110							
71★★	71	112	90	45	Φ14	30	5	11	7x10	1-M20X1.5	Φ85	Φ70	Φ105	2.5	0	M6	Φ115	Φ95							
63	63	100	80	40	Φ11	23	4	8.5	7x10	1-M16X1.5	Φ75	Φ60	Φ90	2.5	0	M5	Φ100	Φ80							
56	56	90	71	36	Φ9	20	3	7.2	5.8x5.8	1-M16X1.5	Φ65	Φ50	Φ80	2.5	0	M5									
FRAME	H	A	B	C	D	E	F	G	K	KK	M	N	P	T	R	S	M	N							
											B34														

132M/L	Φ250	4.0	0	M12	Φ270	325	252	474/500	484/510	564/590	648/674	38	112	119	M12	28	34	10.2	1.5			
132S	Φ250	4.0	0	M12	Φ270	325	252	436	468	553	636	38	112	119	M12	28	34	10.2	1.5			
112	Φ200	3.5	0	M10	Φ230	292	220	395	410	483	455	32	112	119	M10	22	28	8.5	1.5			
100★★	Φ200	3.5	0	M10	Φ205	252	196	368(386)	392(410)	474	445	26	105	105	M10	22	28	8.5	1.5			
90L1/L2	Φ160	3.5	0	M8	Φ185	235	175	335/365	345/375	392	463	30	105	105	M8	20	25	6.8	1			
90S	Φ160	3.5	0	M8	Φ185	235	175	310	320	367	448	30	105	105	M8	20	25	6.8	1			
80	Φ160	3.5	0	M8	Φ165	217	160	290	300	353	390	27	105	105	M6	16	22	5	1			
71★★	Φ140	3.0	0	M8	Φ145	188/180	132	240(254)	252(267)	307	345	20/27	94/80	94/80	M5	12	18	4.2	0.8			
63	Φ120	3.0	0	M6	Φ130	173/165	120	215	232	265	283	14/21	94/80	94/80	M4	10	15	3.3	0.8			
56					Φ120	156/151	110	195					14/21	88/73	88/73	M3	8	12	2.5	0.5		
FRAME	P	T	R	S	AC	AD	AA	L	Lcc <sup>±</sup>	Lccl <sup>±</sup>	Lca <sup>±</sup>	TBS	TBW	TBH	SS	XX	ZZ	CC	Y			
	B34B																					

★★ : This frame size has two housing sizes, the rated output is for normal "L" size, and increased output is for the bigger "L" size (refer to the figures in the bracket " ( ) ")