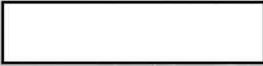


Part number:

**HYDROMA**

HYDRAULICKÉ SYSTÉMY

**HIDROMA  
SYSTEMS**

UKŁADY HYDRAULICZNE

**HYDROMA**

ГИДРАВЛИЧЕСКИЕ СИСТЕМЫ

# Solenoid operated valves pilot operated poppet type

## 2-way normally closed

### Special cavity, 017-E

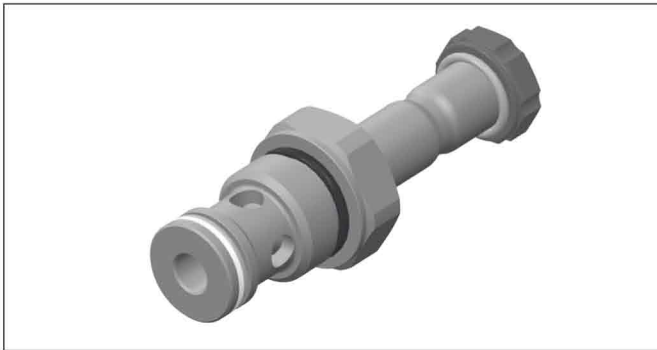
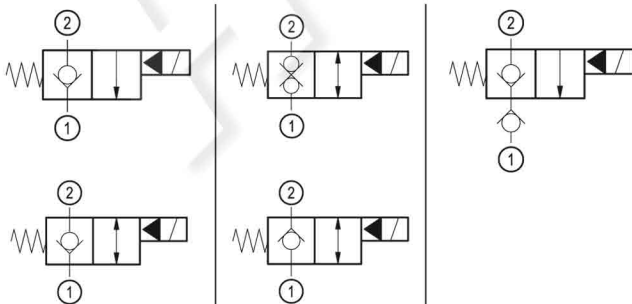
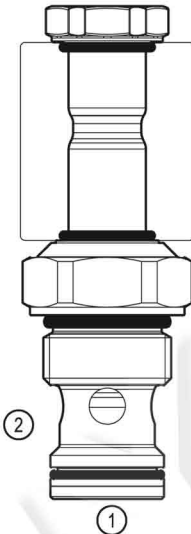
VEI-16-NC

OD.15 - X - 17 - Y - Z

**RE 18323-34**

Edition: 04.2021

Replaces: 03.2020

**PATENT PENDING****Technical data**

New VEI-16 family incorporates a new solenoid concept providing excellent performance and enables cartridges to work in severe environment. Cartridges also incorporates advanced design of hydraulic parts providing excellent hydraulic performance.

**Technical data**

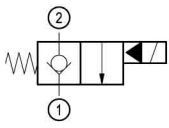
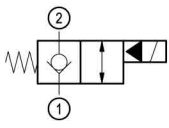
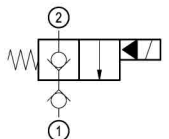
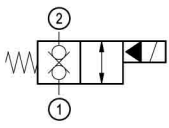
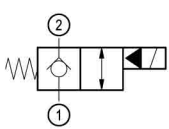
| General  |  |
|--|--|
| Weight   | 0.25 kg (0.55 lbs)                                       |
| Installation orientation   | Unrestricted   |
| Storage ambient temperature range  | -40 to 100 °C (-40 to 212 °F)                            |
| Operating ambient temperature range  | -30 to 90 °C (-22 to 194 °F)                             |
| Salt spray test to<br>DIN EN ISO 9227:2017-07  | 500h   |
| Hydraulic  |  |
| Max. operating pressure  | 350 bar (5000 psi)                                       |
| Flow range   | 2 - 70 l/min (0.53 - 18 gpm)                             |
| Fatigue cycle life   | 2 million cycles at 350 bar                              |
| Max. internal leakage  | 5 drops/min. for X=01,05,11<br>20 drops/min. for X=03,31 |
| Installation torque  | 54 - 66 Nm (40 - 49 ft-lbs)                              |
| Switching time   | Opening ≤ 50 ms<br>Closing ≤ 100 ms                      |
| Fluid temperature range  | -20 to 80 °C (-4 to 176 °F)                              |
| Fluids: Mineral-based or synthetics with lubricating properties at viscosities of 20 to 380 mm <sup>2</sup> /s (cSt) |  |
| Recommended degree of fluid contamination  | Nominal value max. 10 µm (NAS 8) ISO 4406 19/17/14       |
| MTTFD  | 150 years see RE 18350-51                                |
| Special cavity   | 017-E see 18325-75                                       |
| Seal kit for X=01,05,11  | code material no. RG17E201052010 R934003562              |
| Seal kit for X=03,31   | code material no. RG17E201053010 R934003563              |
| Seal kit coil and standard cap   | code material no. RG02Z0010000100 R930067869             |
| Seal kit coil and protective cap only for Y=D  | code material no. RG03Z0010000100 R930067870             |
| Other technical data   | See data sheet 18350-50                                  |
| Electrical   |  |
| Type of voltage  | DC voltage   |
| Coil type  | D36  |
| Supply voltage   | See data sheet 18325-90                                  |
| Voltage tolerance against ambient temperature  | See characteristic curve                                 |
| Power consumption  | 20 W   |
| Type of protection   | See data sheet 18325-90                                  |
| Note: Coils must be ordered separately   |  |

Ordering code

|              |          |           |          |          |             |          |
|--------------|----------|-----------|----------|----------|-------------|----------|
| <b>OD.15</b> | <b>X</b> | <b>17</b> | <b>Y</b> | <b>Z</b> | <b>0000</b> | <b>*</b> |
|--------------|----------|-----------|----------|----------|-------------|----------|

Solenoid operated valves  
pilot operated poppet type  
2-way normally closed

Series O/A to L  
unchanged performances and dimensions

|  |   |
|--|---|
| <p>monodirectional type</p>  <p style="text-align: right;"><b>01</b></p>            | <p>0 = With buna seal<br/>8 = With buna seal and extra spring only for <b>03, 05, 31</b><br/>V = With Viton seal<br/>P = With buna seal and protective cap for override version <b>D</b><br/>T = With Viton seal and protective cap for override version <b>D</b></p> |
| <p>bidirectional type</p>  <p style="text-align: right;"><b>05</b></p>              | <p>A = Standard<br/>D = Knob style manual override<br/>E = Pull style manual override<br/>F = Hand operated pull style manual override</p>  |
| <p>monodirectional type with check</p>  <p style="text-align: right;"><b>11</b></p> | <p>Special cavity: 017-E</p>  |
| <p>bidirectional type</p>  <p style="text-align: right;"><b>31</b></p>             |   |
| <p>bidirectional type</p>  <p style="text-align: right;"><b>03</b></p>            |   |

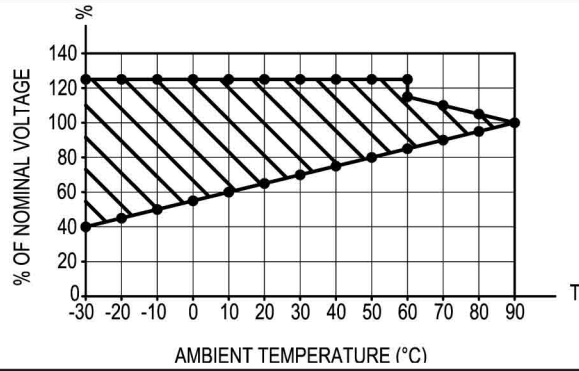
Preferred types

| Type            | Material number |
|-----------------|-----------------|
| OD150117A000000 | R930062337      |
| OD150117D000000 | R930065472      |
| OD150517A000000 | R930062338      |
| OD150517D000000 | R930064099      |
| OD151117A000000 | R930064362      |
| OD150517DP00000 | R930066439      |
| OD153117A000000 | R930065028      |
| OD153117D000000 | R930067162      |

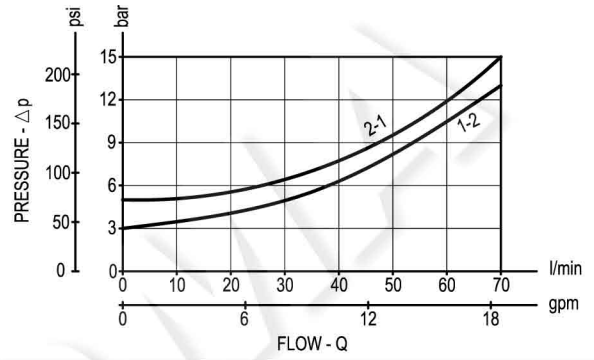
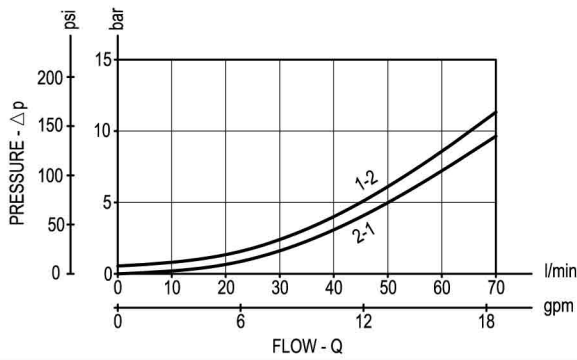
| Type            | Material number |
|-----------------|-----------------|
| OD150317A000000 | R930066965      |
| OD150317D000000 | R930066967      |
| OD150517A800000 | R930065551      |
| OD150317A800000 | R930065610      |
| OD150517E000000 | R930070202      |
| OD153117A800000 | R930066700      |
| OD153117D800000 | R930067588      |

Characteristic curves

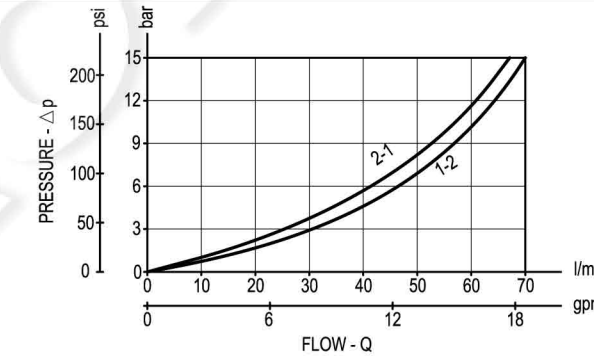
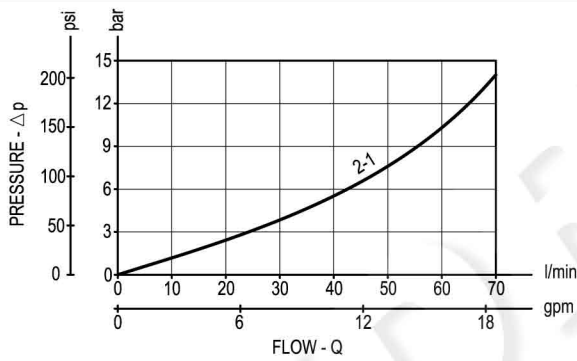
All Versions - Admissible supply voltage Vs. Ambient temperature at 100% duty cycle



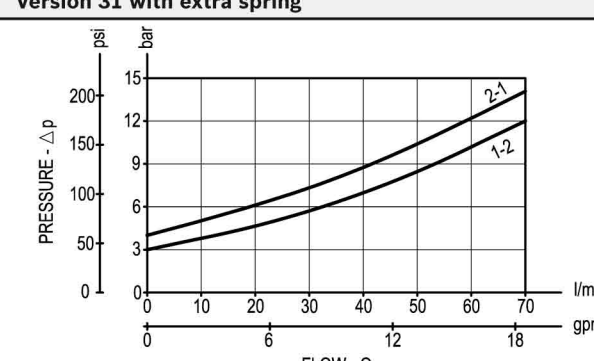
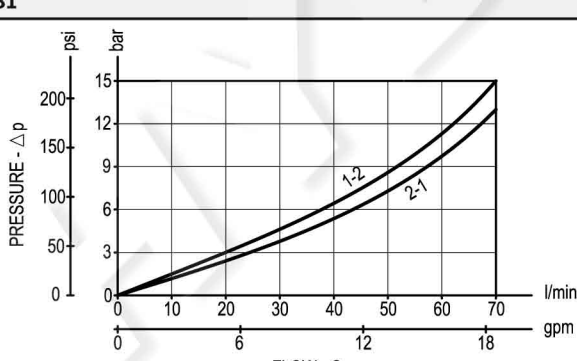
Versions 01, 05      Versions 03, 05 with extra spring



Version 11      Version 03



Version 31      Version 31 with extra spring



**Dimensions**

**Solenoid operated valves pilot operated poppet type  
2-way normally closed**

Hand operated Pull style manual override

