

Part number:

**006-10291**

**HYDROMA**

HYDRAULICKÉ SYSTÉMY

**HIDROMA  
SISTEMS**

UKŁADY HYDRAULICZNE

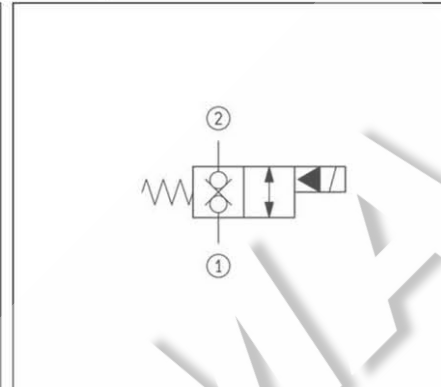
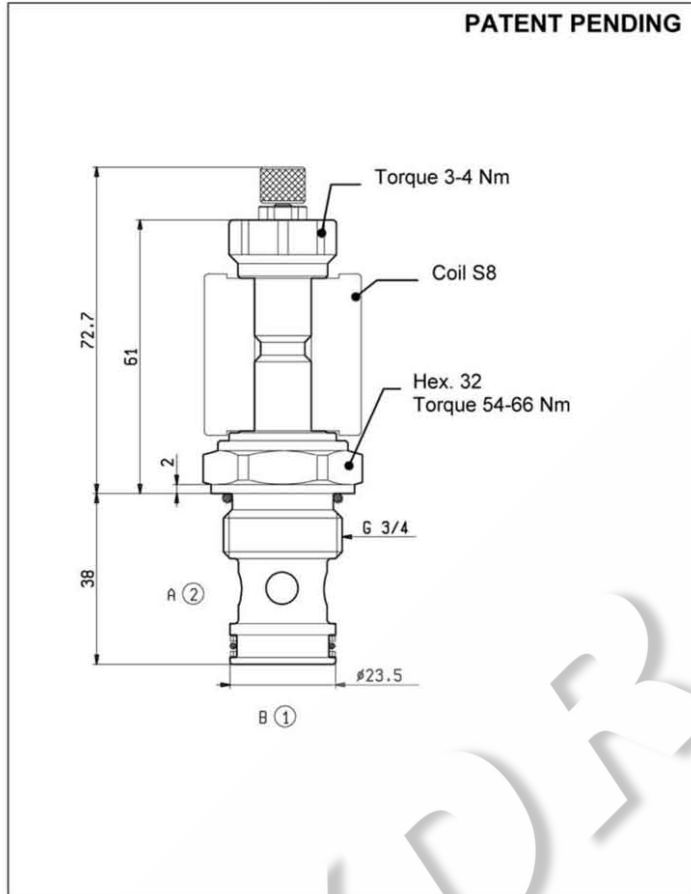
**HYDROMA**

ГИДРАВЛИЧЕСКИЕ СИСТЕМЫ

**SOLENOID OPERATED VALVES  
POPPET 2-WAY DOUBLE LOCK NORMALLY CLOSED  
CARTRIDGE STYLE**

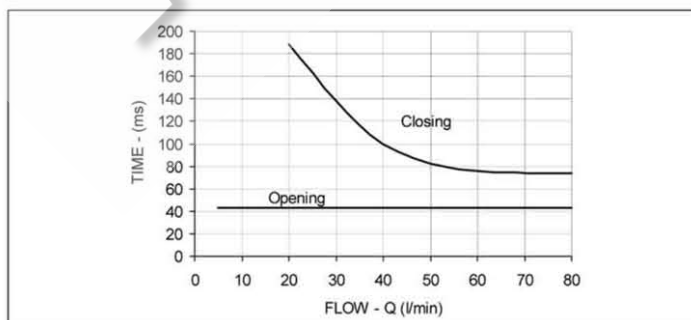
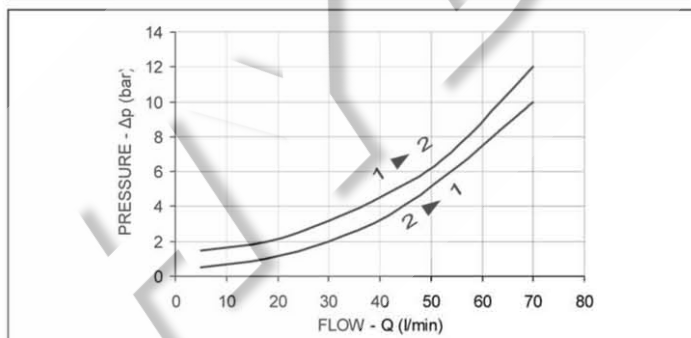
**VEI-8A-2T-09-NC-S-NSS**

**OD.15.31.17 - Y - S0**



**TECHNICAL DATA**

Maximum Operating Pressure	350	bar
Fatigue Cycle Life at 350 bar and 0.5 Hz (1 s ON - 1 s OFF)	10 million	cycles
Rated Flow	70	l/min
Cavity - Tooling (017-E)	page 7.01.100	
Weight	0.220	kg
Fluids - Temperatures	page 7.01.040	
Testing Conditions - Seals	page 7.01.040	
Internal Leakage	page 7.01.040	
Filtration : 25 µm nominal or better	page 7.01.050	
Minimum Voltage Required	90% of nominal	
Coils must be ordered separately	page 1.71.050	
Mounting Position	unrestricted	



Rev.03.04

Y	ORDERING OPTIONS	
<b>3A</b>	Standard	
<b>3B</b>	Knob Style Manual Override	

1.13B.460.G